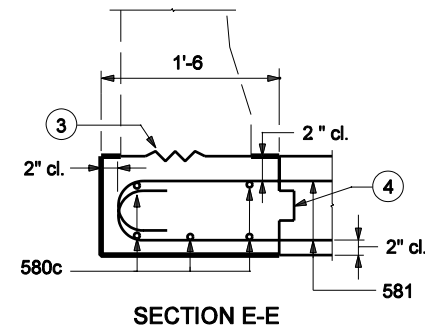


BILL OF MATERIALS			
These quantities are for one side Approach Slab Extension.			
EPOXY COATED REINFORCING STEEL			
Size & Mark	No. of Bars	Length (ft-in)	Weight (lb)
580c	5	16'-7	
581	42	4'-2	
Total #5 bars			269
Total Epoxy Coated Steel			269
MISCELLANEOUS			
R.C. Br. Appr., 10"			2.7 yd ²



NOTES :

1. See Standard Drawings E 706-TTBC-01 through -03 for concrete bridge railing transition type TBC details.
2. See Standard Drawing E 706-TASE-05 for General Notes.

INDIANA DEPARTMENT OF TRANSPORTATION	
BRIDGE RAILING TRANSITION TBC SLAB EXTENSION	
SEPTEMBER 2004	
STANDARD DRAWING NO. E 706-TASE-01	
	/s/ Richard L. VanCleave 9-01-04 DESIGN STANDARDS ENGINEER DATE
	/s/ Richard K. Smutzer 9-01-04 CHIEF HIGHWAY ENGINEER DATE
DESIGN STANDARDS ENGINEER	