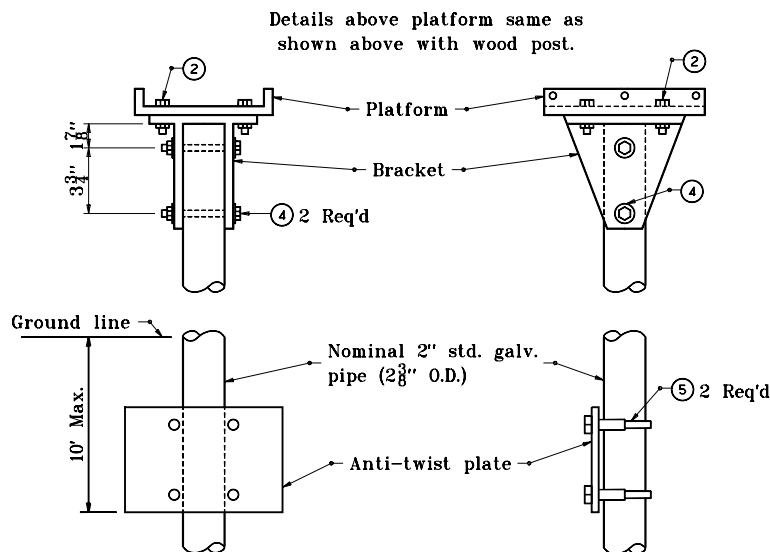


WITH WOOD POST



WITH PIPE POST

LEGEND

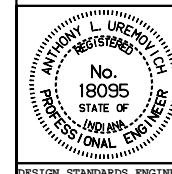
- ① #8-32 x "L" truss head machine screw with two $\frac{1}{4}$ " flat washers, $\frac{1}{4}$ " lock washers, and $\frac{1}{4}$ " hex nut.
- ② $\frac{3}{8}$ "-16 x $\frac{3}{4}$ " hex cap screw with two $\frac{3}{8}$ " flat washers, $\frac{3}{8}$ " lock washer and $\frac{3}{8}$ " hex nut.
- ③ $\frac{3}{8}$ "-16 x $4\frac{1}{2}$ " hex cap screw with two $\frac{3}{8}$ " flat washers, $\frac{3}{8}$ " lock washer, and $\frac{3}{8}$ " hex nut.
- ④ $\frac{3}{8}$ "-16 x 3" hex cap screw with two $\frac{3}{8}$ " flat washers, $\frac{3}{8}$ " lock washer, and $\frac{3}{8}$ " hex nut.
- ⑤ Nominal 2 $\frac{3}{8}$ " muffler clamp

INDIANA DEPARTMENT OF TRANSPORTATION

SINGLE MAILBOX ASSEMBLY

APRIL 1995

STANDARD DRAWING NO. **E 611-MBAS-01**



DETAILS PLACED IN THIS FORMAT 11-15-99

/s/ Anthony L. Uremovich 11-15-99
DESIGN STANDARDS ENGINEER DATE

/s/ Firooz Zandi 11-15-99
CHIEF HIGHWAY ENGINEER DATE

DESIGN STANDARDS ENGINEER

ORIGINALLY APPROVED 4-03-95