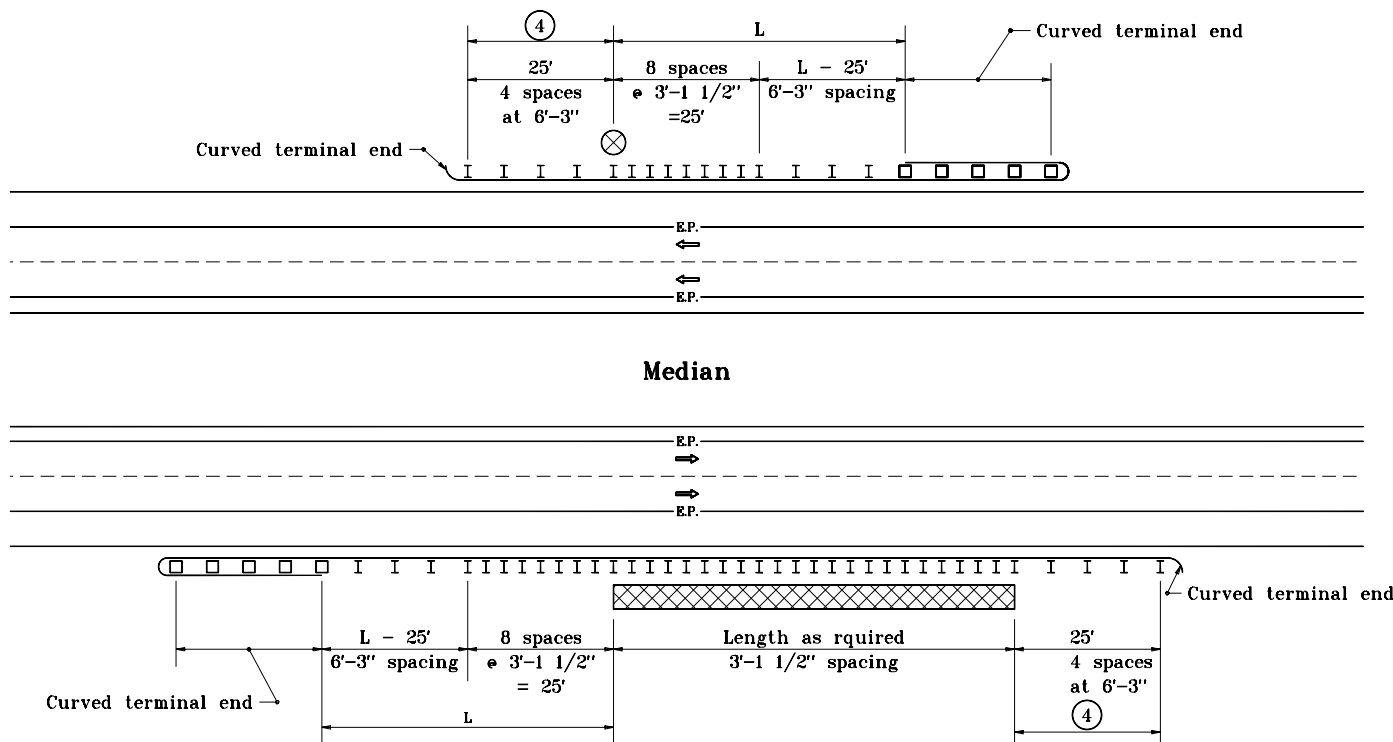


LEGEND

L = Length of need

⊗ Isolated hazard

⊠ Extended hazard



MULTI-LANE DIVIDED ROADWAY GUARDRAIL LAYOUT FOR GUARDRAIL FACE TO HAZARD DISTANCE $\geq 3'-3''$ BUT $< 4'-3''$

GENERAL NOTES

1. This drawing shall be used where W-beam guardrail at 3'-1 1/2" post spacing is specified on a divided lane roadway to shield an isolated or extended hazard.
 2. The details on this drawing are typical guardrail layouts for shielding an isolated or extended hazard for the guardrail-face-to-hazard distances shown.
 3. Dimensions and details not shown on this drawing shall be as shown on the plans.
- ④ Rectangular plate washers shall be installed at each post along this section.

INDIANA DEPARTMENT OF TRANSPORTATION	
ROADSIDE HAZARD PROTECTION GUARDRAIL SEPTEMBER 1997	
STANDARD DRAWING NO. E 601-RHPG-02	
	DETAILS PLACED IN THIS FORMAT 11-15-99
	/s/ Anthony L. Uremovich 11-15-99 DESIGN STANDARDS ENGINEER DATE
	/s/ Firooz Zandi 11-15-99 CHIEF HIGHWAY ENGINEER DATE
DESIGN STANDARDS ENGINEER	ORIGINALLY APPROVED 9-01-97