

**BILL OF MATERIALS
SKEWED STRUCTURES – ONE SLAB**

BRIDGE APPROACH WIDTH mm	REINFORCING STEEL			
	LONGIT. BARS, AREA (A)		TRANSV. BARS, AREA (A)	
	NO.	MARK	NO.	SIZE
7200	48	1691	11	#16
7600	51	1691	11	#16
7800	52	1691	11	#16
8200	55	1691	11	#16
8800	59	1691	11	#16
9400	63	1691	11	#16
10000	67	1691	11	#16
10600	71	1691	11	#16
11200	75	1691	11	#16
11800	79	1691	11	#16
12100	81	1691	11	#16
12400	83	1691	*22	#16
13600	91	1691	*22	#16
* Bars lapped 540 at centerline of roadway.				

GENERAL NOTES

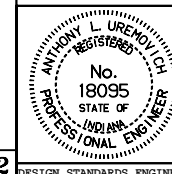
1. The Bill of Materials shall be used to determine the longitudinal bar requirements in Area (A) shown on Standard Drawing 610-RCBA-05 for skewed structures.
2. See the plans for longitudinal bars required in Area (B), all transverse bars, total mass of steel and bridge approach slab area for skewed structures.

All dimensions are in mm unless otherwise specified.

INDIANA DEPARTMENT OF TRANSPORTATION

**REINFORCED CONCRETE
BRIDGE APPROACH SLAB**
SEPTEMBER 1998

STANDARD DRAWING NO. 610-RCBA-07



/s/ Anthony L. Uremovich 9-01-98
DESIGN STANDARDS ENGINEER DATE

/s/ Donald W. Lucas 9-01-98
CHIEF HIGHWAY ENGINEER DATE

Source Sheet: RCBA2