

NOTES:

- ① The maximum algebraic difference in grades shall not exceed 8% for crest vertical curves, nor 12% for sag vertical curves.
- ② See Standard Drawing 610-DRIV-16 for keyway joint details.

LEGEND

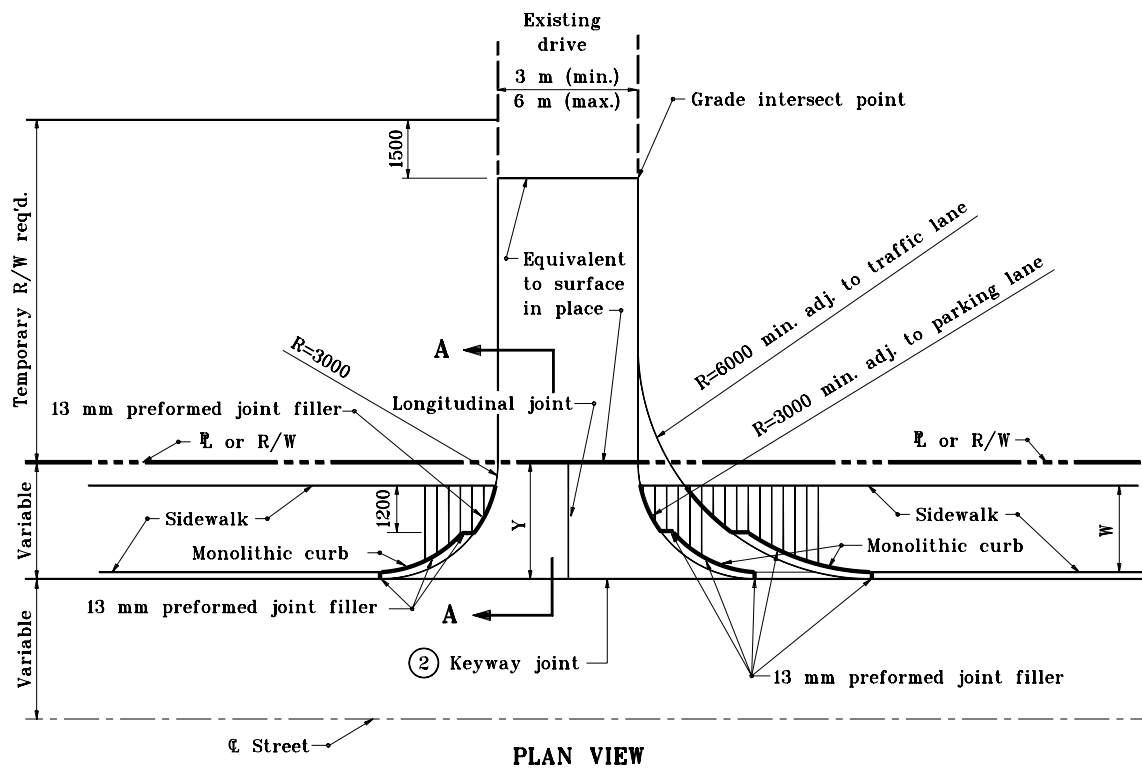
W = Width of sidewalk

Y = Distance from front face of curb to ℄ or R/W

▨ Curb ramp

▨ Curb ramp view

▨ Concrete pavement



All dimensions are in mm unless otherwise specified.

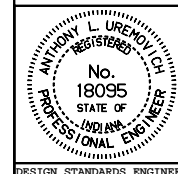
INDIANA DEPARTMENT OF TRANSPORTATION

CLASS I DRIVE

SIDEWALK ADJACENT TO CURB

JANUARY 2000

STANDARD DRAWING NO. 610-DRIV-01



/s/ Anthony L. Uremovich 1-03-00
DESIGN STANDARDS ENGINEER DATE

/s/ Firooz Zandi 1-03-00
CHIEF HIGHWAY ENGINEER DATE