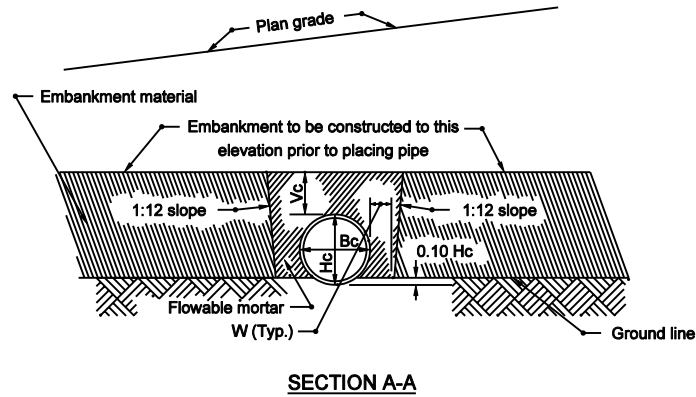


# NOTE

1. Refer to Standard Drawing E 715-BKFL-09 for general notes.

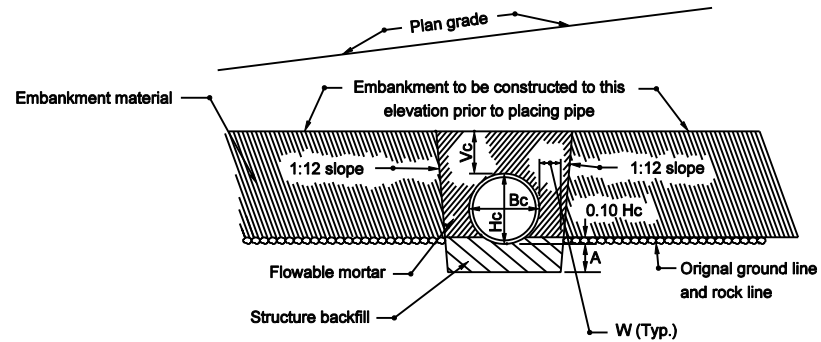


SECTION A-A

## LEGEND

- Hc = Overall diameter or rise  
 Bc = Overall diameter or span  
 A = 8" min. for fill height up to 16'  
     = 12" min. for fill height of 16' or more  
 Vc = 12" for Bc ≤ 18"  
     = 18" for Bc > 18"  
 W = 6" for Bc > 21"  
     = 0.3 Bc for 21" > Bc ≤ 42"  
     = 12" for Bc ≤ 42"

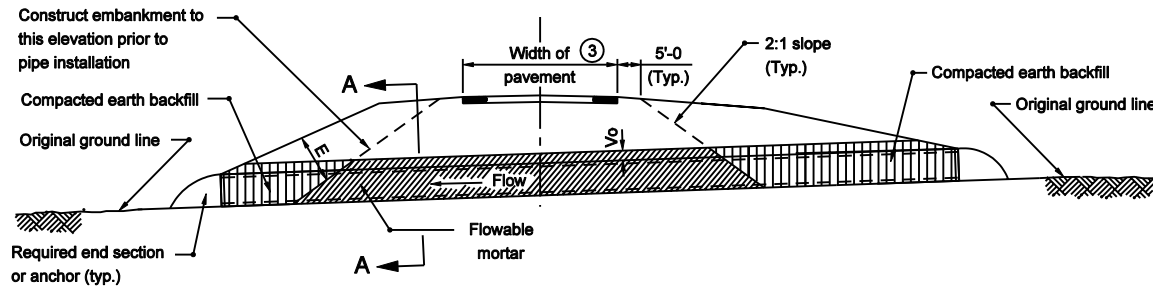
⑦ E = Encasement



SECTION A-A  
ROCK FOUNDATION

## METHOD 1 BACKFILL

Structures under mainline pavement and public road approaches.



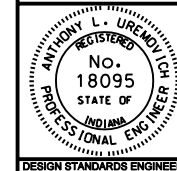
ELEVATION

INDIANA DEPARTMENT OF TRANSPORTATION

## PIPE STRUCTURE BACKFILL EMBANKMENT INSTALLATIONS

MARCH 2003

STANDARD DRAWING NO. E 715-BKFL-02



/s/ Anthony L. Uremovich 3-03-03  
DESIGN STANDARDS ENGINEER DATE

/s/ Richard K. Smutzer 3-03-03  
CHIEF HIGHWAY ENGINEER DATE

DESIGN STANDARDS ENGINEER