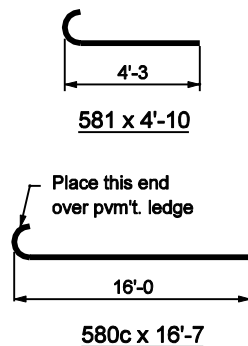
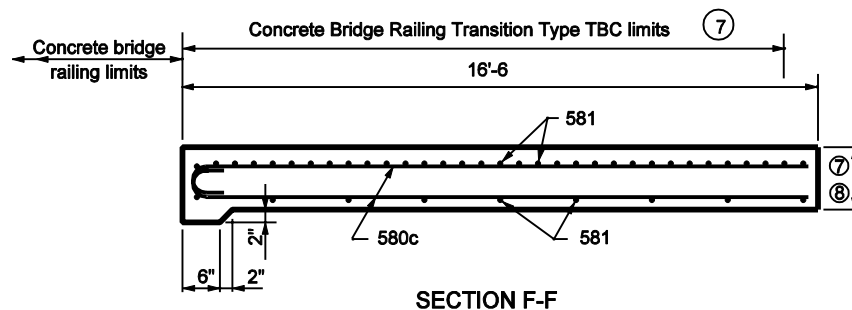



## SECTION E-E

1. See Standard Drawings E 706-TTBC-01 through -03 for concrete bridge railing transition type TBC details.
2. See Standard Drawing E 706-TASE-05 for General Notes.



BILL OF MATERIALS			
These quantities are for one side Approach Slab Extension.			
EPOXY COATED REINFORCING STEEL			
Size & Mark	No. of Bars	Length (ft-in)	Weight (lb)
580c	5	16'-7	
581	42	4'-10	
Total #5 bars			298
Total Epoxy Coated Steel			298
MISCELLANEOUS			
R.C. Br. Appr., 10"			2.8 yd <sup>2</sup>

INDIANA DEPARTMENT OF TRANSPORTATION	
<p align="center"><b>BRIDGE RAILING TRANSITION TBC SLAB EXTENSION</b></p> <p align="center"><b>SEPTEMBER 2002</b></p>	
<b>STANDARD DRAWING NO. E 706-TASE-01</b>	
	<p><i>/s/ Richard L. VanCleave</i>      <b>9-03-02</b></p> <p>DESIGN STANDARDS ENGINEER      DATE</p> <p><i>/s/ Richard K. Smutzer</i>      <b>9-03-02</b></p> <p>CHIEF HIGHWAY ENGINEER      DATE</p>
<b>DESIGN STANDARDS ENGINEER</b>	