

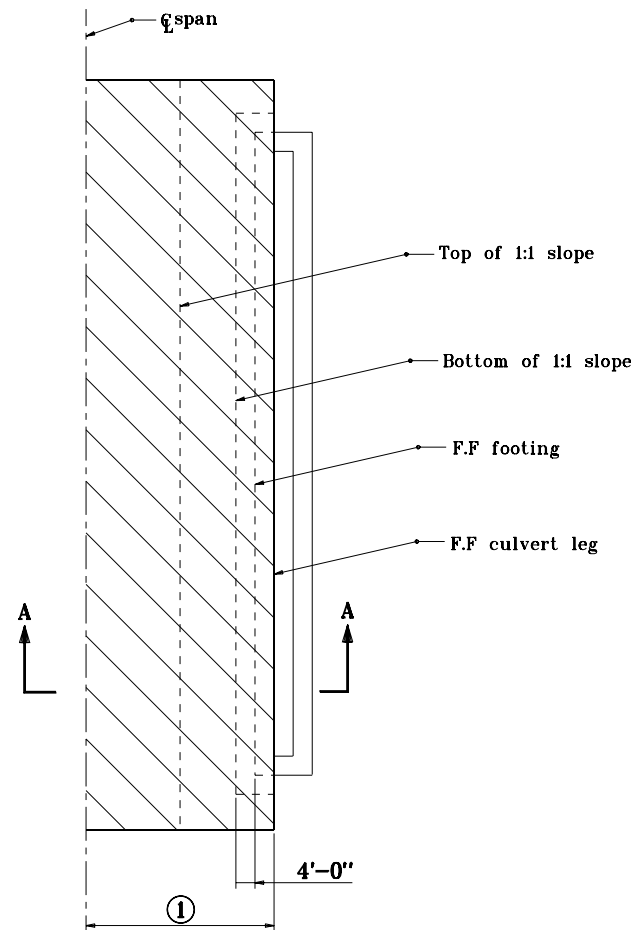
PLAN - WITH WINGWALLS

NOTES:

- ① Half of span width.
2. Crosshatched area indicates riprap limits.
3. See Standard Drawing 714-CCSP-02 for Section A-A, for span length of 20'-0" or greater.
See Standard Drawing 714-CCSP-03 for Section A-A for span length from 10'-0" to less than 20'-0".

RIPRAP METHOD

F.F. = Front face



PLAN - PROJECTING

Source Sheet: None

INDIANA DEPARTMENT OF TRANSPORTATION	
THREE-SIDED CONCRETE CULVERT SCOUR PROTECTION	
JANUARY 1999	
STANDARD DRAWING NO. E 714-CCSP-01	
	/s/ Anthony L. Uremovich 1-04-99 DESIGN STANDARDS ENGINEER DATE
	/s/ Donald W. Lucas 1-04-99 CHIEF HIGHWAY ENGINEER DATE