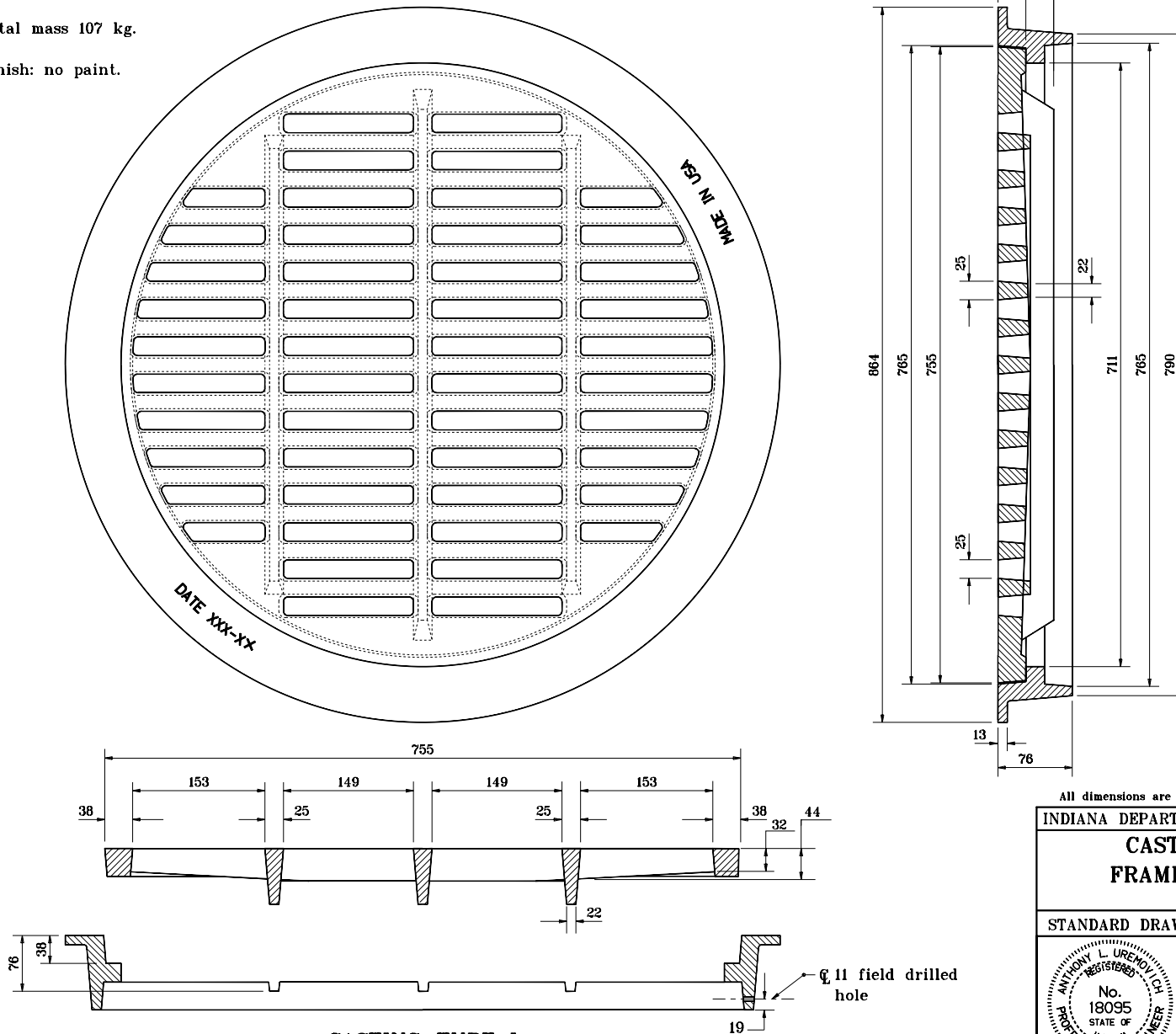


# GENERAL NOTES

1. Casting total mass 107 kg.
2. Casting finish: no paint.



**CASTING TYPE I**

Source Sheet: None

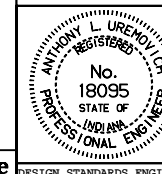
All dimensions are in mm unless otherwise specified.

INDIANA DEPARTMENT OF TRANSPORTATION

**CASTING TYPE I  
FRAME AND GRATE**

MAY 1998

STANDARD DRAWING NO. **720-SDCP-02**



/s/ Anthony L. Uremovich 5-01-98  
DESIGN STANDARDS ENGINEER DATE

/s/ Donald W. Lucas 5-01-98  
CHIEF HIGHWAY ENGINEER DATE

DESIGN STANDARDS ENGINEER