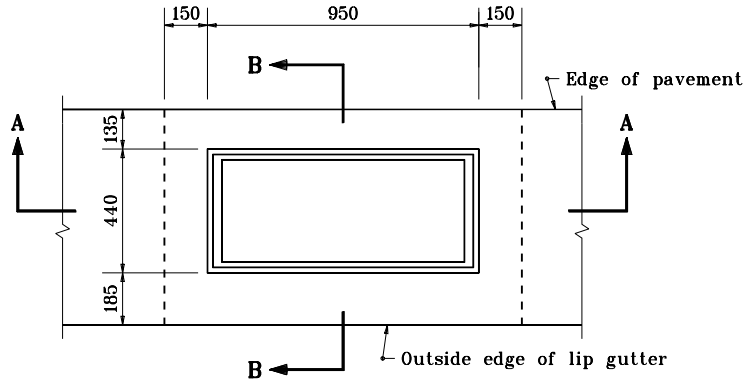
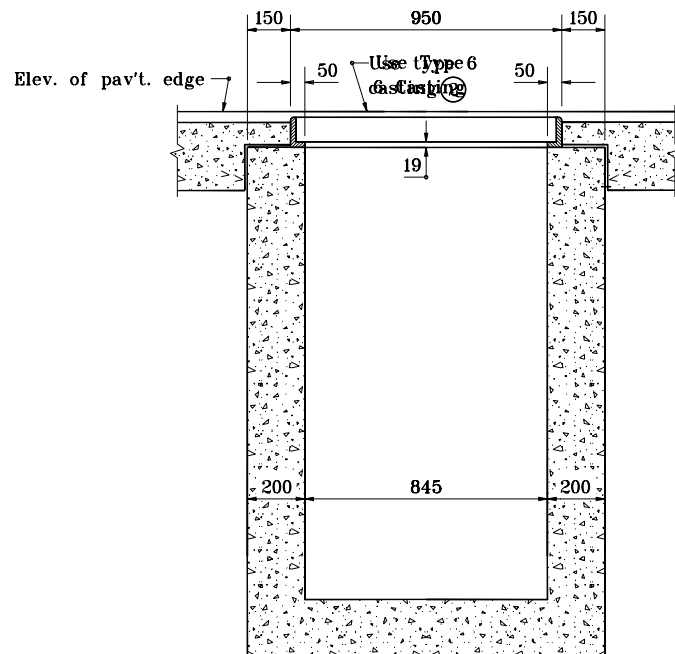


GENERAL NOTES

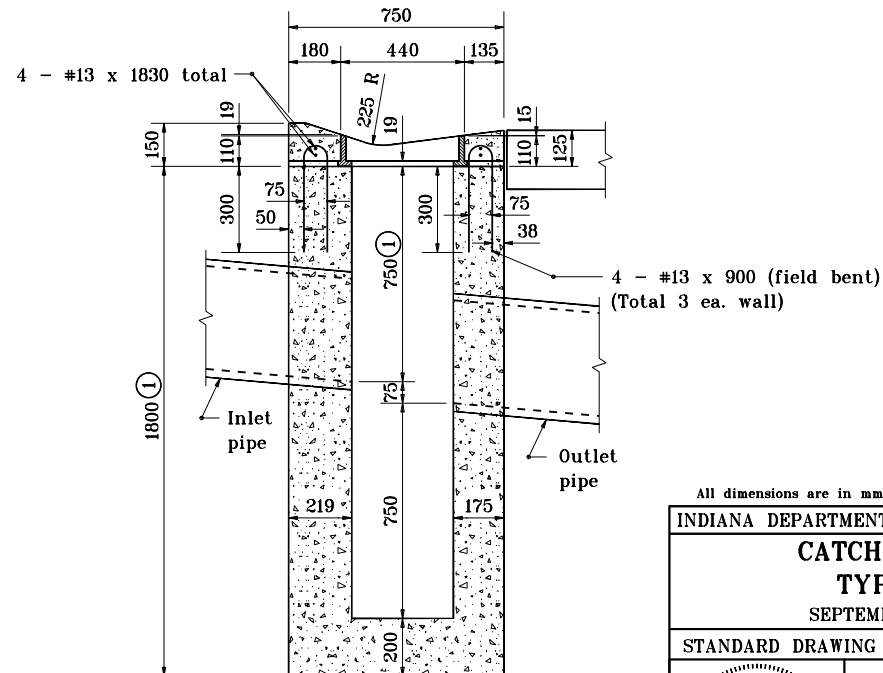
- ① These dimensions may be increased or decreased by 300, as directed.
- ② See Standard Drawing 720-INCA-01 for casting type 6 details.



PLAN



SECTION A-A



SECTION B-B

All dimensions are in mm unless otherwise specified.

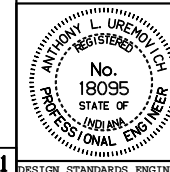
INDIANA DEPARTMENT OF TRANSPORTATION

CATCH BASIN

TYPE D

SEPTEMBER 1997

STANDARD DRAWING NO. **720-CBST-02**



/s/ Anthony L. Uremovich 9-01-97
DESIGN STANDARDS ENGINEER DATE

/s/ Donald W. Lucas 9-01-97
CHIEF HIGHWAY ENGINEER DATE

Source Sheet: MD1