

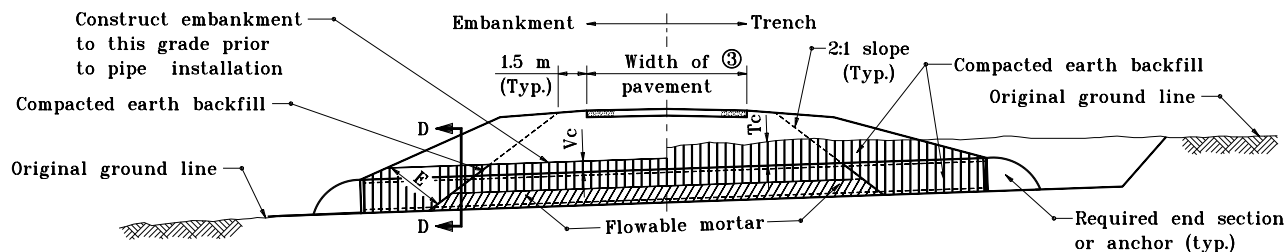
**SECTION D-D
EMBANKMENT/TRENCH INSTALLATION
ROCK FOUNDATION**

LEGEND

- Hc = Overall diameter or rise
 Bc = Overall diameter or span
 A = 200 min. for fill height up to 5.0 m
 = 300 min. for fill height of 5.0 m or more
 Vc = 300 for Bc ≤ 450
 = 500 for Bc > 450
 Tc = Trench cover depth
 W = 150 for Bc ≤ 500
 = 0.3 Bc for 500 < Bc ≤ 1000
 = 300 for Bc > 1000
 ⑦ E = Encasement

METHOD 2 BACKFILL

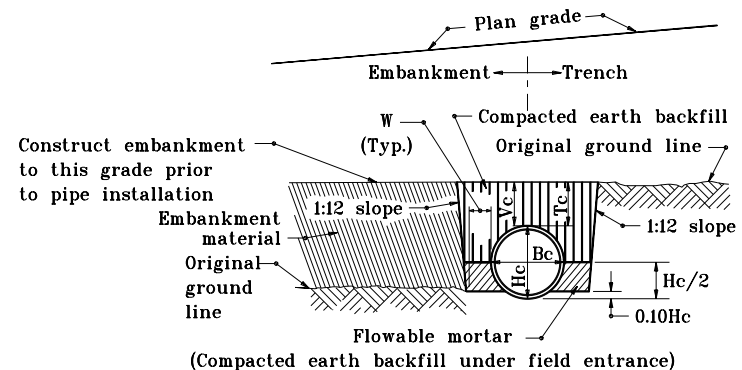
Structures under commercial and private drive approaches.



ELEVATION

NOTES

1. Refer to Standard Drawing 715-BKFL-09 for general notes.



**SECTION D-D
EMBANKMENT/TRENCH INSTALLATION**

All dimensions are in mm unless otherwise specified.

INDIANA DEPARTMENT OF TRANSPORTATION	
PIPE STRUCTURE BACKFILL DRIVEWAY INSTALLATIONS	
JANUARY 1998	
STANDARD DRAWING NO. 715-BKFL-08	
	/s/ Anthony L. Uremovich 1-02-98 DESIGN STANDARDS ENGINEER DATE
	/s/ Donald W. Lucas 1-02-98 CHIEF HIGHWAY ENGINEER DATE

Source Sheet: MN