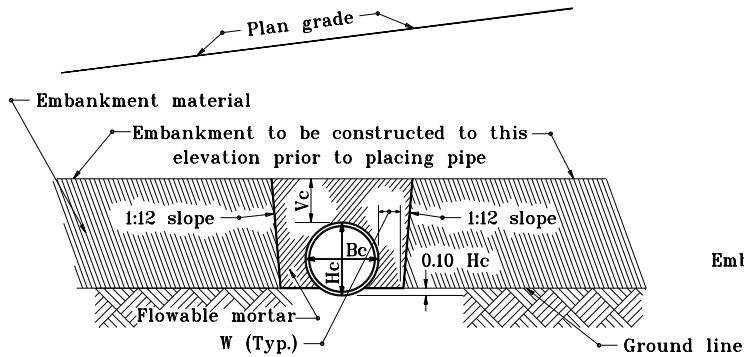


NOTE

1. Refer to Standard Drawing 715-BKFL-09 for general notes.



SECTION A-A

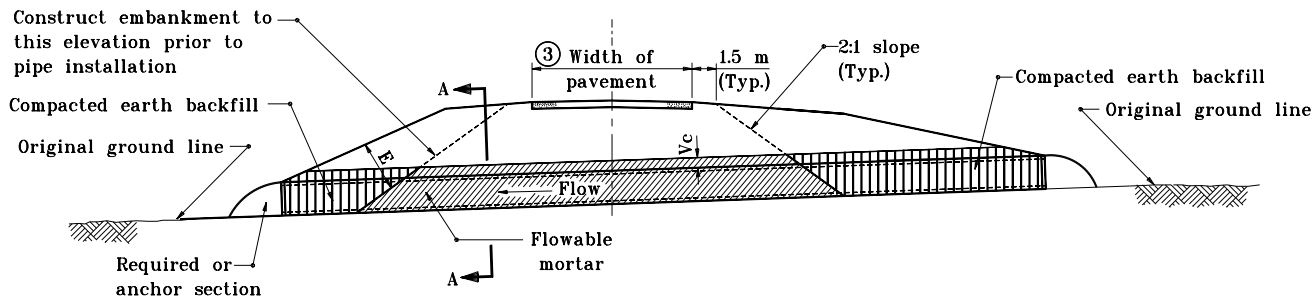
LEGEND

- Hc = Overall diameter or rise
 Bc = Overall diameter or span
 A = 200 min. for fill height up to 5.0 m
 = 300 min. for fill height of 5.0 m or more
 Vc = 300 for Bc ≤ 450
 = 500 for Bc > 450
 W = 150 for Bc ≤ 500
 = 0.3 Bc for 500 < Bc ≤ 1000
 = 300 for Bc > 1000

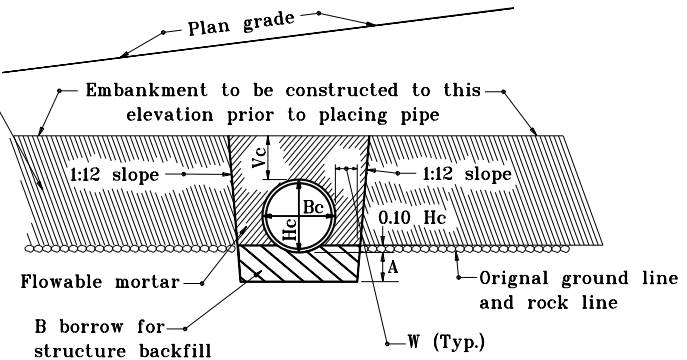
⑦ E = Encasement

METHOD 1 BACKFILL

Structures under mainline pavement and public road approaches.



ELEVATION



SECTION A-A
ROCK FOUNDATION

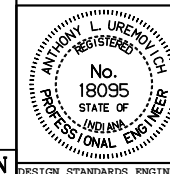
All dimensions are in mm unless otherwise specified.

INDIANA DEPARTMENT OF TRANSPORTATION

PIPE STRUCTURE BACKFILL
EMBANKMENT INSTALLATIONS

JANUARY 1998

STANDARD DRAWING NO. 715-BKFL-02



/s/ Anthony L. Uremovich 1-02-98
DESIGN STANDARDS ENGINEER DATE

/s/ Donald W. Lucas 1-02-98
CHIEF HIGHWAY ENGINEER DATE

Source Sheet: MN