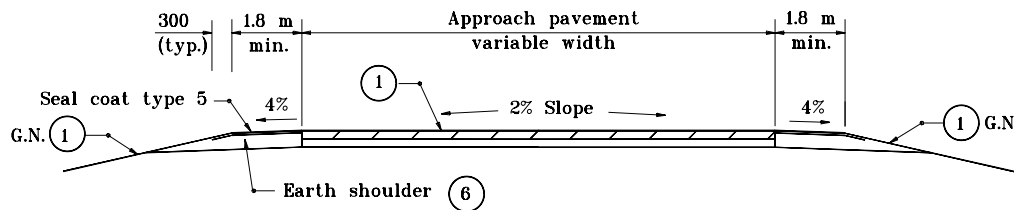


PUBLIC ROAD APPROACH TYPE A

NOTES :

1. 75 kg/m² HMA Surface 9.5 mm, Mainline on 165 kg/m² HMA Intermediate 19.0 mm, Mainline on 200 mm compacted aggregate base
2. See General Notes on Standard Drawing 610-PRAP-04.
3. See Table on Standard Drawing 610-PRAP-05 for computed values.
4. G.N. - See General Notes



SECTION A-A MINIMUM PAVEMENT SECTION

For ADT \leq 1000, ESAL: 250,000 (7)

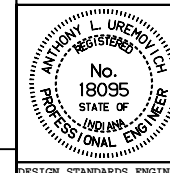
All dimensions are in mm unless otherwise specified.

INDIANA DEPARTMENT OF TRANSPORTATION

**PUBLIC ROAD APPROACH
TYPE A**

MAY 1999

STANDARD DRAWING NO. 610-PRAP-02



/s/ Anthony L. Uremovich 5-03-99
DESIGN STANDARDS ENGINEER DATE

/s/ Donald W. Lucas 5-03-99
CHIEF HIGHWAY ENGINEER DATE

Source Sheet: MI