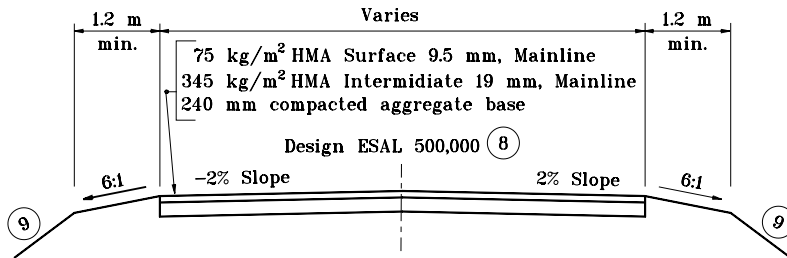
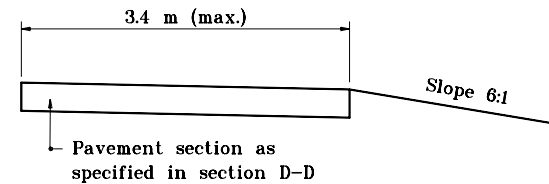


CLASS VI DRIVE - PLAN

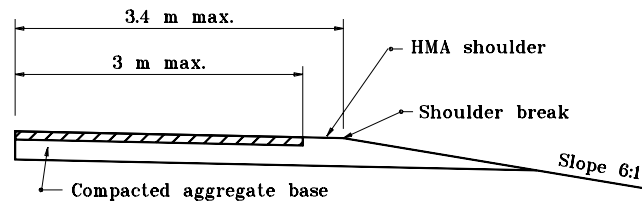
COMMERCIAL



SECTION D-D



SECTION E-E



SECTION F-F

NOTES :

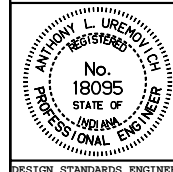
1. The Class VI Drive is designed to accommodate a WB-20 (IDV) design vehicle with a 14 m turning radius. This drive shall be specified at truck stops and entrances to heavy industrial property.
2. See Standard Drawing 610-DRIV-13 for profile grades.
3. See Standard Drawing 610-DRIV-14 for General Notes and Legend.

All dimensions are in mm unless otherwise specified.

INDIANA DEPARTMENT OF TRANSPORTATION

**CLASS VI DRIVE
PLAN AND SECTIONS**
JANUARY 2000

STANDARD DRAWING NO. **610-DRIV-12**



/s/ Anthony L. Uremovich 1-03-00
DESIGN STANDARDS ENGINEER DATE

/s/ Firooz Zandi 1-03-00
CHIEF HIGHWAY ENGINEER DATE