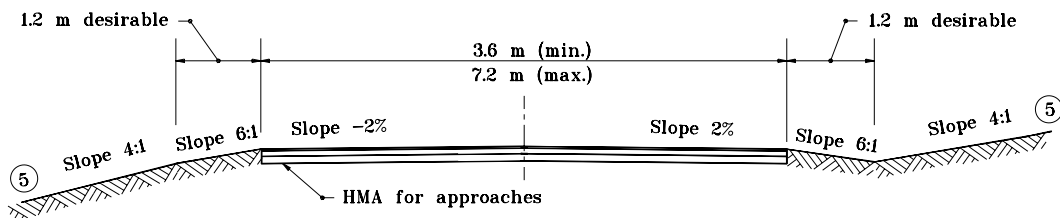


PLAN VIEW

USED FOR RESIDENCES, BARNS, PRIVATE GARAGES, ETC.



SECTION S-S

NOTES :

1. The driveway detailed on this sheet shall be used under the following conditions:
 - the mainline shoulder is paved and is less than 2.4 m in width
 - the mainline shoulder is not paved
2. If the driveway surface is unimproved cross section as for driveway Class V can be used in place of Section S-S, see Drawing 610-DRIV-11 for details.
3. See Standard Drawing 610-DRIV-07 for General Notes.
4. See Standard Drawing 610-DRIV-06 for Sections A-A and B-B.

LEGEND

- (M) Limits of HMA for approaches
- (P) Limits of compacted aggregate base
- (S) Equivalent to surface in place

Width variable
75 kg/m ² HMA Surface 9.5 mm, Mainline on
165 kg/m ² HMA Intermediate 19 mm, Mainline on
100 mm compacted aggregate base
Design for ESAL 250,000

HMA FOR APPROACHES

TYPICAL SECTION

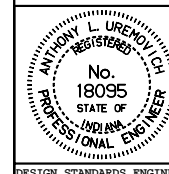
All dimensions are in mm unless otherwise specified.

INDIANA DEPARTMENT OF TRANSPORTATION

CLASS II DRIVE

JANUARY 2000

STANDARD DRAWING NO. 610-DRIV-04



/s/ Anthony L. Uremovich 1-03-00
DESIGN STANDARDS ENGINEER DATE

/s/ Firooz Zandi 1-03-00
CHIEF HIGHWAY ENGINEER DATE