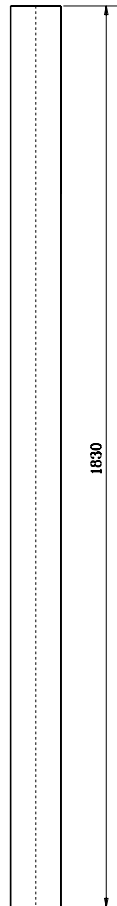
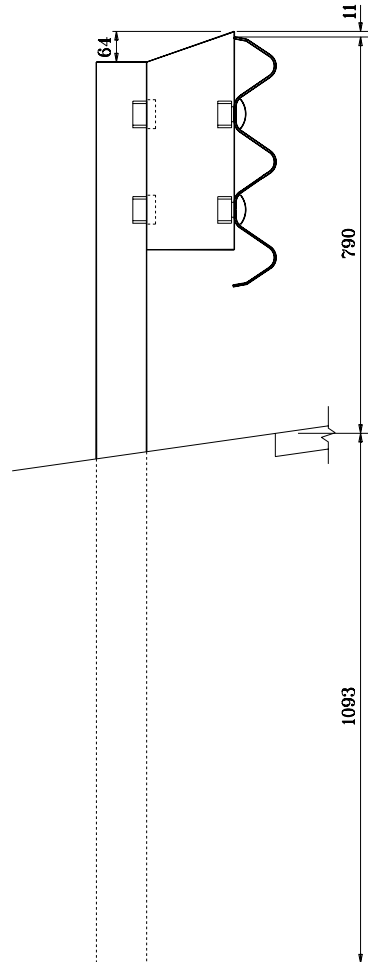


FRONT VIEW



BACK VIEW

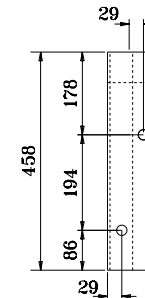


SIDE VIEW

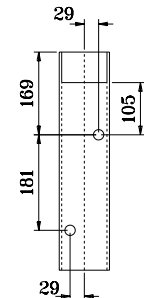
W 150 x 14 POST DETAILS

NOTE:

1. All holes drilled or punched to 21 dia.



FRONT VIEW



BACK VIEW

TS 178 x 102 x 4.8 BLOCK DETAILS

POST AND BLOCK AT
THRIE BEAM / W-THRIE
TRANSITION SECTION SPLICE

All dimensions are in mm unless otherwise specified.

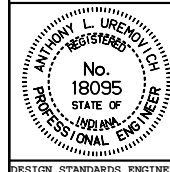
INDIANA DEPARTMENT OF TRANSPORTATION

GUARDRAIL TRANSITION

TYPE TGB

JANUARY 2000

STANDARD DRAWING NO. **601-TTGB-03**



/s/ **Anthony L. Uremovitch** f-03-00
DESIGN STANDARDS ENGINEER DATE

/s/ **Firooz Zandi** f-03-00
CHIEF HIGHWAY ENGINEER DATE

DESIGN STANDARDS ENGINEER