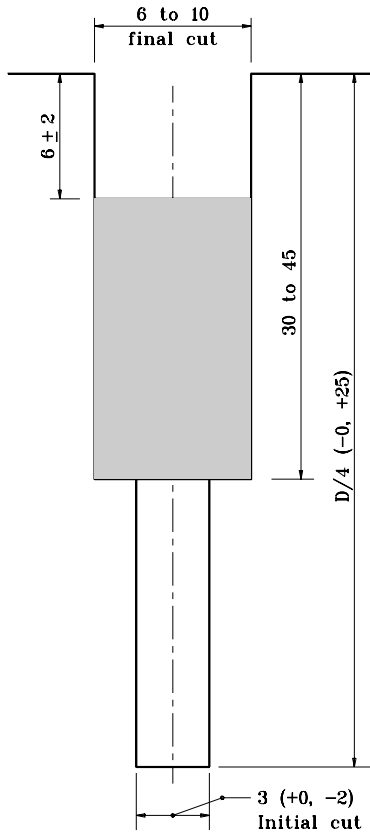
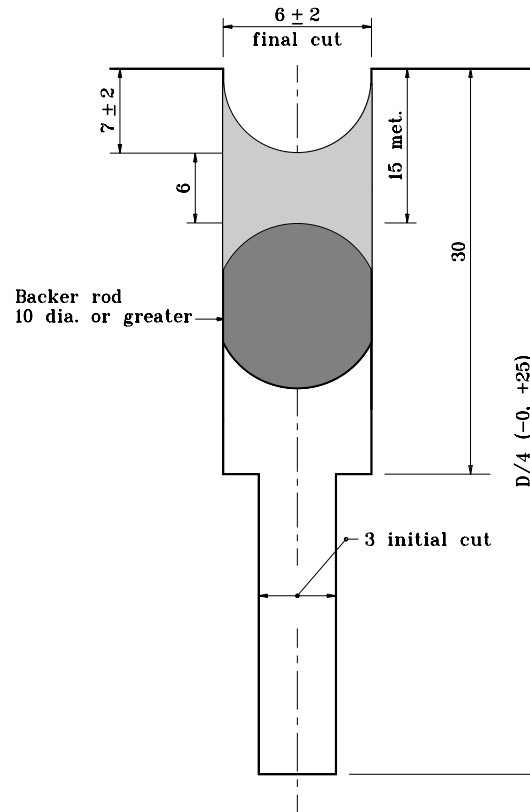


NOTES

1. Transverse joints shall be constructed perpendicular to the centerline with a maximum spacing of 5500 unless otherwise specified.
2. The configuration of the preformed elastomeric joint seal shall be a 14 to 17 wide seal with at least a five cell internal design. The seal height shall be 14 to 21 in uncompressed stage.
3. For transverse construction joints, the initial saw cut may be eliminated.



**PREFORMED ELASTOMERIC
SEAL**



**SILICONE JOINT
SEALANT**

TYPE D-1 SAWED CONTRACTION JOINT SEALANT OPTIONS

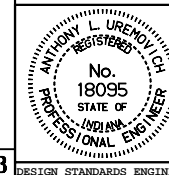
All dimensions are in mm unless otherwise specified.

INDIANA DEPARTMENT OF TRANSPORTATION

TRANSVERSE JOINT SEALS

SEPTEMBER 1999

STANDARD DRAWING NO. 503-CCPJ-06



/s/ Anthony L. Uremovich 9-01-99
DESIGN STANDARDS ENGINEER DATE

/s/ Donald W. Lucas 9-01-99
CHIEF HIGHWAY ENGINEER DATE

Source Sheet: CCPJ3