

DETOUR

XM 4-8

**RTE
MKR**

M1-4 or M1-6 ①



M5-1(L or R)S

**① ADVANCE TURN DETOUR
ROUTE MARKER ASSEMBLY**

DETOUR

XM 4-8

**RTE
MKR**

M1-4 or M1-6 ①



M6-1S

**② DIRECTIONAL DETOUR ROUTE
MARKER ASSEMBLY**

DETOUR

XM 4-8

NORTH

M3-1S to M3-4S

**RTE
MKR**

M1-4 or M1-6 ①



M6-3S

**③ CONFIRMING DETOUR ROUTE
MARKER ASSEMBLY**

END

XM 4-6S

DETOUR

XM 4-8

**RTE
MKR**

M1-4 or M1-6 ①



M5-1(L or R)S

**④ END DETOUR ROUTE
MARKER ASSEMBLY**

GENERAL NOTES

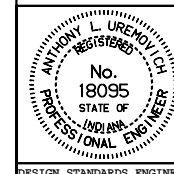
- ① For an un-numbered route, a street name sign or county road name or number sign shall be used in lieu of the route marker in detour route marker assembly.
- ② Advance turn detour route marker assemblies shall be located as shown, or after the last cross street prior to the beginning of the detour, as directed.
- ③ Directional detour route marker assemblies shall be located 100 ft to 200 ft in advance of all required turns within the detour limits.
- ④ Confirming detour route marker assemblies shall be located 200 ft past all major intersections, as directed, and shall be spaced a maximum of 3 mi on a rural detour or 0.5 mi on an urban detour on each leg of such detours. Confirming detour route marker assemblies shall be placed after a required turn when directed.
- ⑤ End detour route marker assemblies shall be located at the point at which traffic is returned to the original route. The advance turn marker (M5-1) shall be included in the assembly when traffic is required to turn to access the original route.

INDIANA DEPARTMENT OF TRANSPORTATION

**DETOUR ROUTE
MARKER ASSIEMBLIES**

JUNE 1995

STANDARD DRAWING NO. **E 801-TCDT-03**



DETAILS PLACED IN THIS FORMAT 11-15-99

/s/ Anthony L. Uremovich 11-15-99
DESIGN STANDARDS ENGINEER DATE

/s/ Firooz Zandi 11-15-99
CHIEF HIGHWAY ENGINEER DATE

DESIGN STANDARDS ENGINEER

ORIGINALLY APPROVED

7-03-95