

**SECTION D-D  
EMBANKMENT/TRENCH INSTALLATION  
ROCK FOUNDATION**

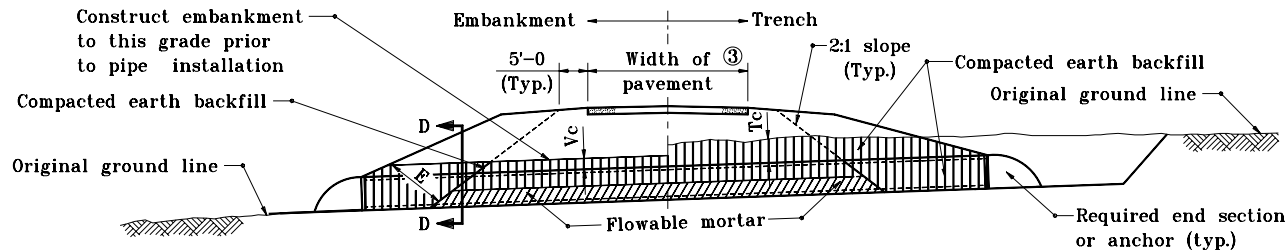
**LEGEND**

Hc = Overall diameter or rise  
 Bc = Overall diameter or span  
 A = 8" min. for fill height up to 16'  
     = 12" min. for fill height of 16' or more  
 Vc = 12" for Bc ≤ 18"  
     = 18" for Bc > 18"  
 Tc = Trench cover depth  
 W = 6" for Bc ≤ 21"  
     = 0.3 Bc for 21" < Bc ≤ 42"  
     = 12" for Bc > 42"

⑦ E = Encasement

**METHOD 2 BACKFILL**

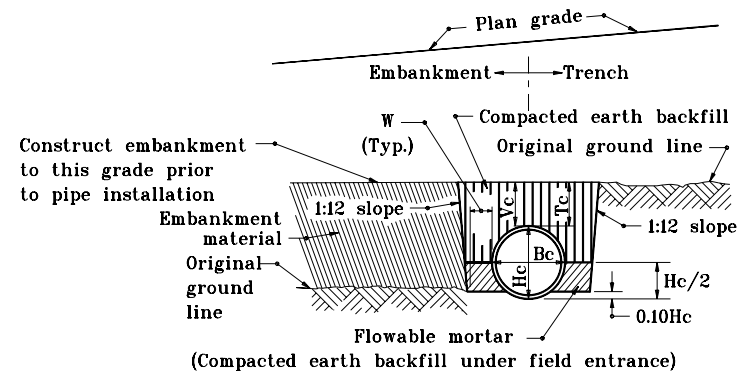
Structures under commercial and private drive approaches.



**ELEVATION**

**NOTES**

1. Refer to Standard Drawing E 715-BKFL-09 for general notes.



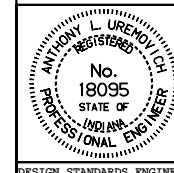
**SECTION D-D  
EMBANKMENT/TRENCH INSTALLATION**

INDIANA DEPARTMENT OF TRANSPORTATION

**PIPE STRUCTURE BACKFILL  
DRIVEWAY INSTALLATIONS**

JANUARY 1998

STANDARD DRAWING NO. E 715-BKFL-08



DETAILS PLACED IN THIS FORMAT 11-15-99

/s/ Anthony L. Uremovich 11-15-99  
 DESIGN STANDARDS ENGINEER DATE

/s/ Firooz Zandi 11-15-99  
 CHIEF HIGHWAY ENGINEER DATE

DESIGN STANDARDS ENGINEER

ORIGINALLY APPROVED 1-02-98