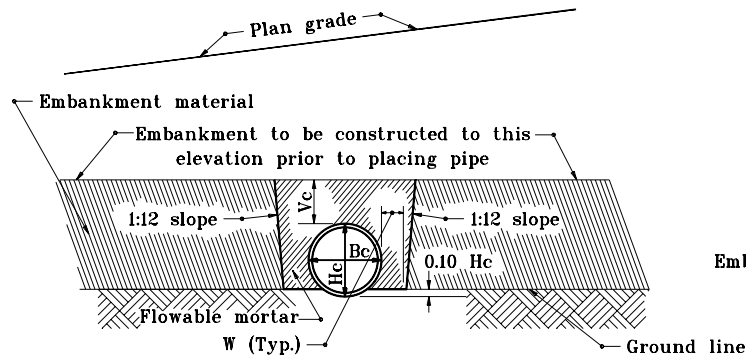


NOTE

1. Refer to Standard Drawing E 715-BKFL-09 for general notes.



SECTION A-A

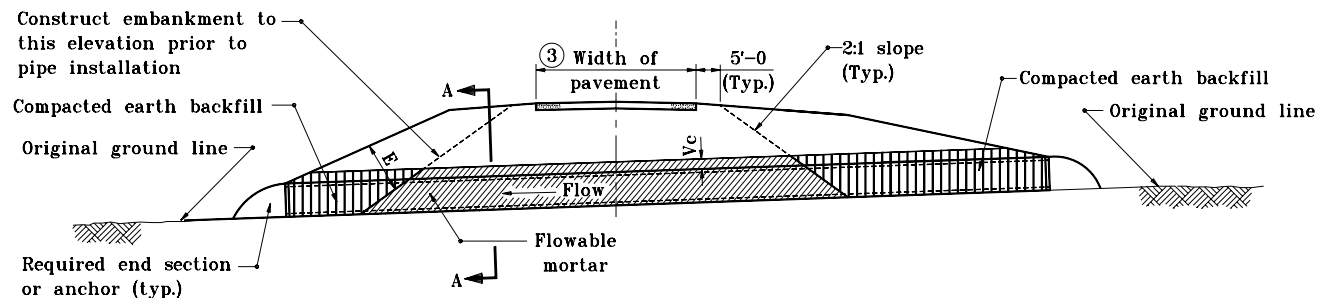
LEGEND

- Hc = Overall diameter or rise
 Bc = Overall diameter or span
 A = 8" min. for fill height up to 16'
 = 12" min. for fill height of 16' or more
 Vc = 12" for Bc ≤ 18"
 = 18" for Bc > 18"
 W = 6" for Bc ≤ 21"
 = 0.3 Bc for 21" < Bc ≤ 42"
 = 12" for Bc > 42"

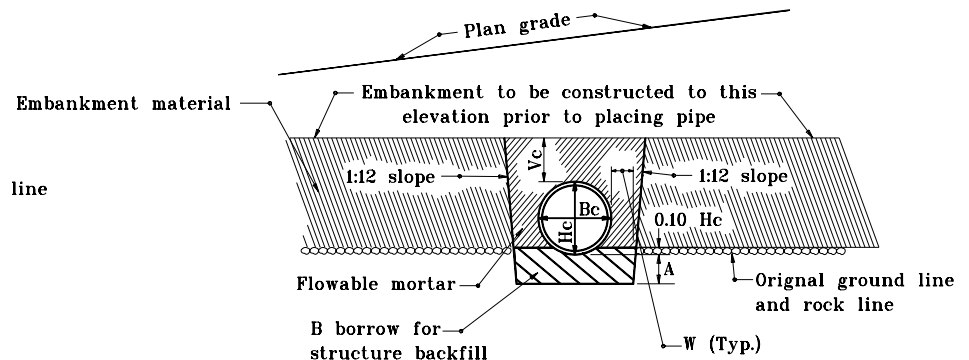
⑦ E = Encasement

METHOD 1 BACKFILL

Structures under mainline pavement and public road approaches.



ELEVATION



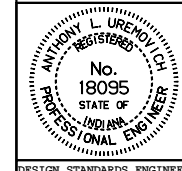
**SECTION A-A
ROCK FOUNDATION**

INDIANA DEPARTMENT OF TRANSPORTATION

**PIPE STRUCTURE BACKFILL
EMBANKMENT INSTALLATIONS**

JANUARY 1998

STANDARD DRAWING NO. **E-715-BKFL-02**



DETAILS PLACED IN THIS FORMAT		11-15-99
/s/ Anthony L. Uremovich	11-15-99	DATE
DESIGN STANDARDS ENGINEER		
/s/ Firooz Zandi	11-15-99	DATE
CHIEF HIGHWAY ENGINEER		
ORIGINALLY APPROVED		1-02-98