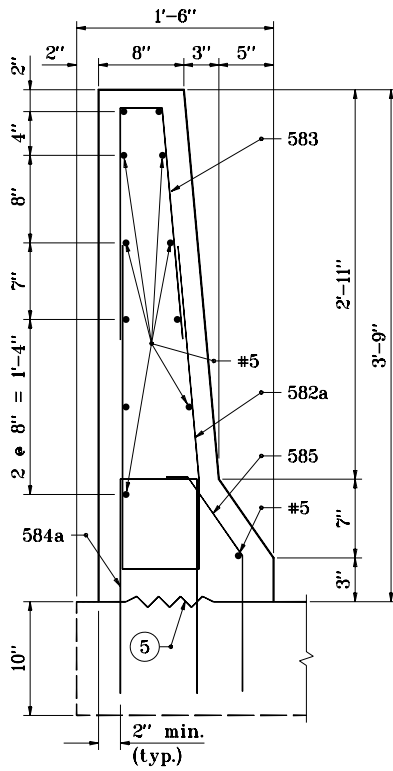
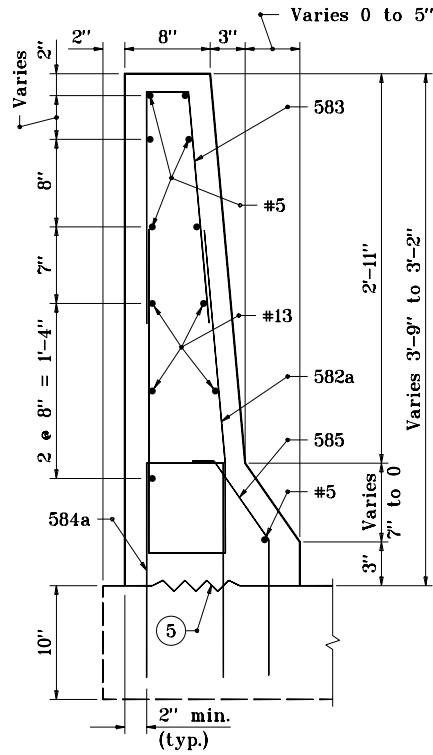


# NOTES:

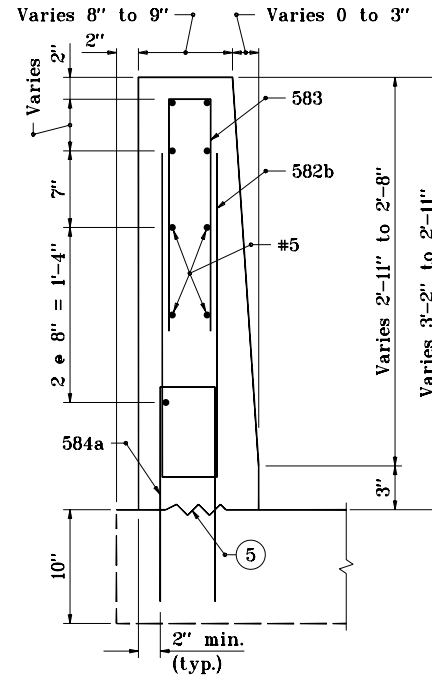
1. See Standard Drawing BR-1 for General Notes.



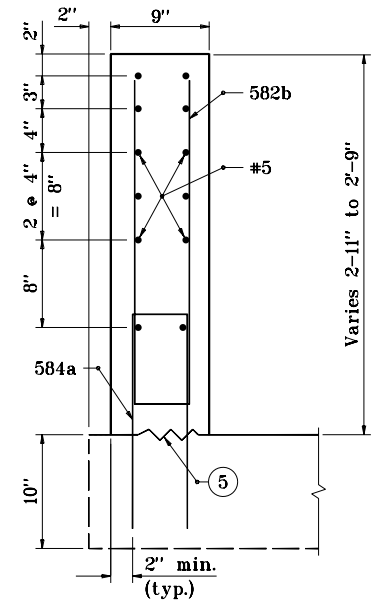
**SECTION A-A**



**SECTION B-B**



**SECTION C-C**



**SECTION D-D**

45" TRUCK HEIGHT THRIE BEAM/  
CONCRETE BRIDGE RAILING TRANSITION

INDIANA DEPARTMENT OF TRANSPORTATION	
CONCRETE BRIDGE RAILING TRANSITION TYPE TBT	
MARCH 2002	
STANDARD DRAWING NO. E 706-TTBT-02	
	/s/ Richard L. VanCleave 3-01-02 DESIGN STANDARDS ENGINEER DATE
	/s/ Richard K. Smutzer 3-01-02 CHIEF HIGHWAY ENGINEER DATE