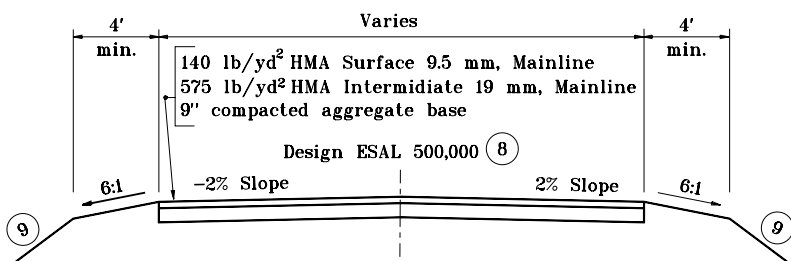
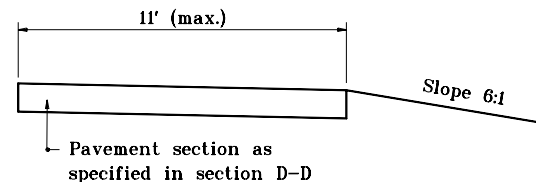


CLASS VI DRIVE - PLAN
COMMERCIAL



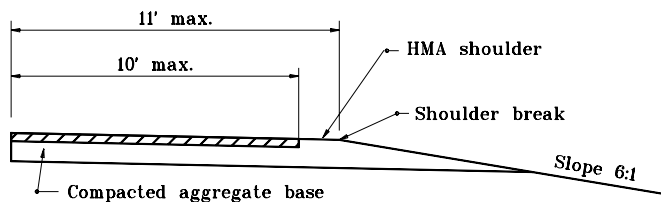
SECTION D-D



SECTION E-E

NOTES :

1. The Class VI Drive is designed to accommodate a WB-65 (IDV) design vehicle with a 45 ft turning radius. This drive shall be specified at truck stops and entrances to heavy industrial property.
2. See Standard Drawing E 610-DRIV-13 for profile grades.
3. See Standard Drawing E 610-DRIV-14 for General Notes and Legend.



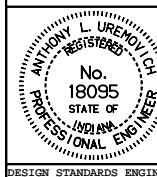
SECTION F-F

INDIANA DEPARTMENT OF TRANSPORTATION

**CLASS VI DRIVE
PLAN AND SECTIONS**

JANUARY 2000

STANDARD DRAWING NO. **E 610-DRIV-12**



/s/ Anthony L. Uremovich 1-03-00
DESIGN STANDARDS ENGINEER DATE

/s/ Firooz Zandi 1-03-00
CHIEF HIGHWAY ENGINEER DATE

DESIGN STANDARDS ENGINEER