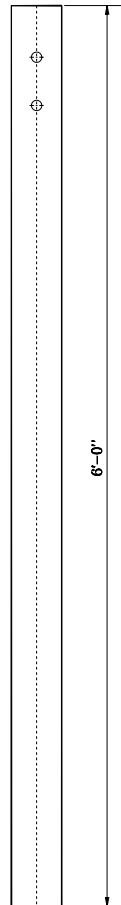
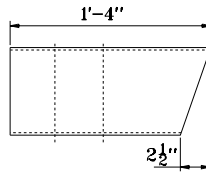


FRONT VIEW



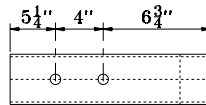
BACK VIEW



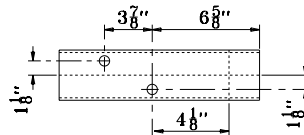
SIDE VIEW



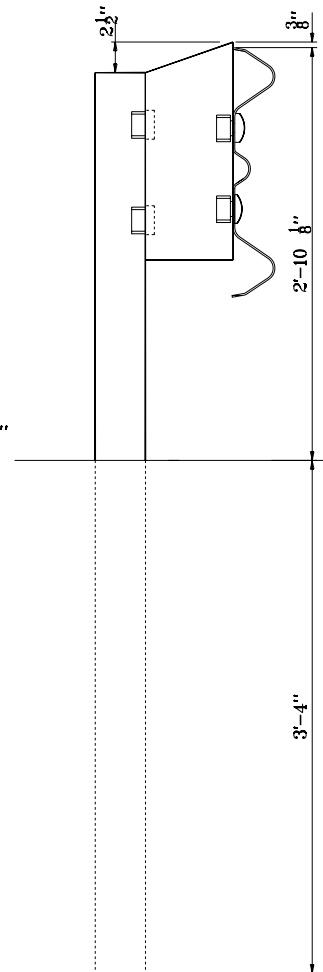
TOP VIEW



FRONT VIEW



BACK VIEW



NOTE:

1. All holes drilled or punched to $\frac{3}{4}$ " dia.

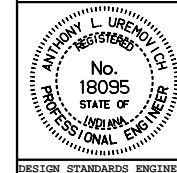
POST AND BLOCK AT
W-THREE BEAM TRANSITION
SECTION CENTER POST

INDIANA DEPARTMENT OF TRANSPORTATION

**GUARDRAIL TRANSITION
TYPE TGB**

SEPTEMBER 1999

STANDARD DRAWING NO. **E 601-TTGB-04**



/s/ Anthony L. Uremovich 9-01-99
DESIGN STANDARDS ENGINEER DATE

/s/ Donald W. Lucas 9-01-99
CHIEF HIGHWAY ENGINEER DATE