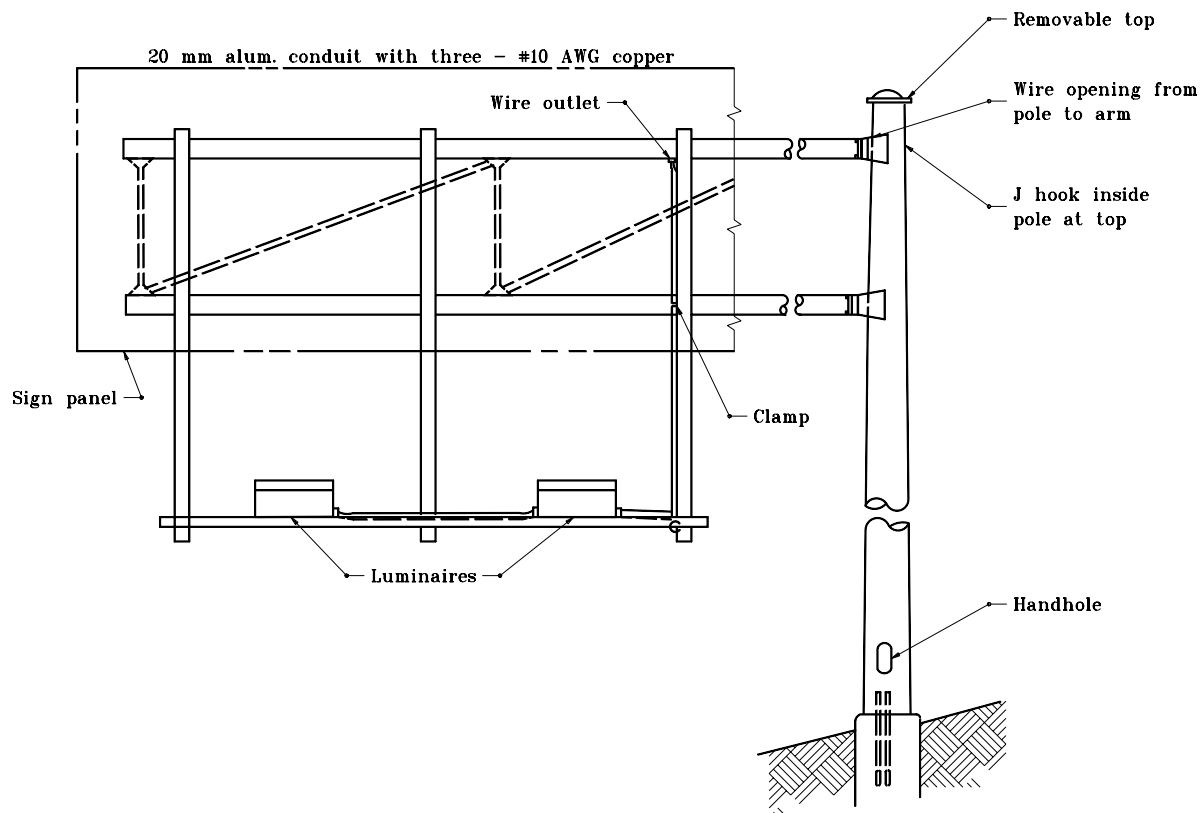


GENERAL NOTES

1. The minimum number of brackets required shall be one more than the number of fixtures installed.



CANTILEVER
(Double Mastarm)

All dimensions are in mm unless otherwise specified.

INDIANA DEPARTMENT OF TRANSPORTATION		
CANTILEVER SIGN STRUCTURE SEPTEMBER 2001		
STANDARD DRAWING NO. 802-SNIL-04		
	/s/ Anthony L. Uremovich 9-04-01	
	DESIGN STANDARDS ENGINEER	DATE
DESIGN STANDARDS ENGINEER	/s/ Firooz Zandi 9-04-01	
	CHIEF HIGHWAY ENGINEER	DATE