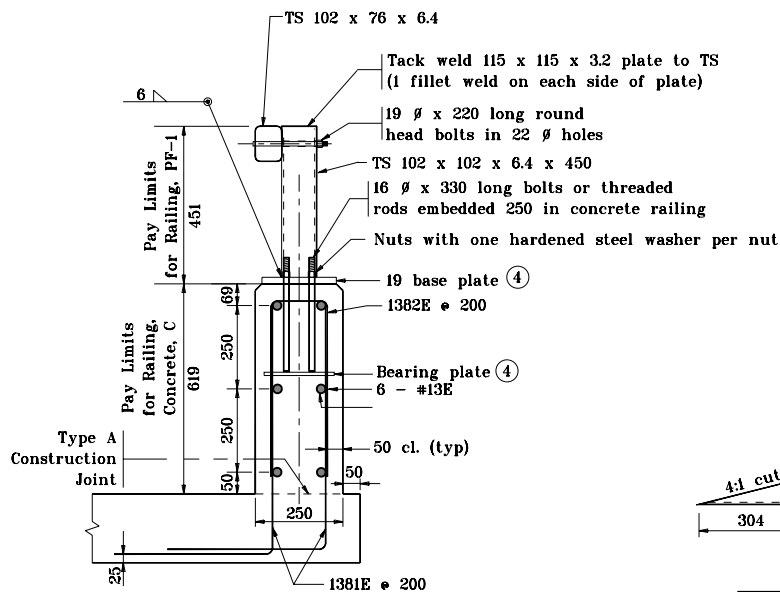
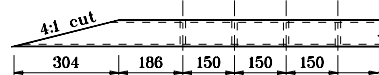


NOTES :

1. All chamfered edges shall be 25.
2. Intermediate railing splices shall be placed every 6 m
- ③ See Standard Drawing 706-BRPP-05 for Railing Tube Details with center of connection at span quarter points. and Inner Sleeve Details.
- ④ See Standard Drawing 706-BRPP-06 for Base Plate Detail, Bearing Plate Detail, and reinforcing steel bar bends.
5. See Standard Drawings 706-TTBP-01 and 706-TTBP-02 for Concrete Bridge Railing Transition, TPF-1
6. See Standard Drawing 703-BRST-01 for Standard 180° bar bending detail.
7. Reinforcing bars designated "E" shall be epoxy coated.



TYPICAL SECTION



DETAIL A
(Plan View of top rail)

All dimensions are in mm unless otherwise specified.

INDIANA DEPARTMENT OF TRANSPORTATION	
RAILING, PF-1	
SEPTEMBER 2001	
STANDARD DRAWING NO. 706-BRPP-01	
	/s/ Anthony L. Uremovich 9-04-01 DESIGN STANDARDS ENGINEER DATE
	/s/ Firooz Zandi 9-04-01 CHIEF HIGHWAY ENGINEER DATE
DESIGN STANDARDS ENGINEER	