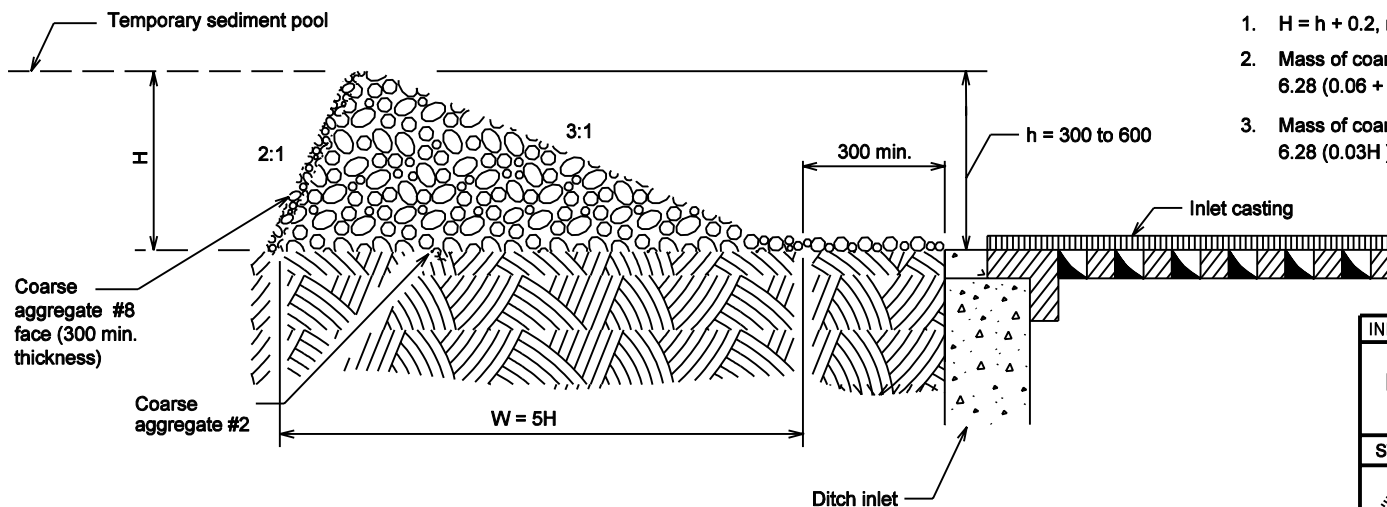


GENERAL NOTES

1. $H = h + 0.2, m$
2. Mass of coarse aggregate #2, Mg:
 $6.28 (0.06 + 2.5H^2) (0.3 + 3H + \frac{1}{2} \text{ inlet width}) (0.7119)$
3. Mass of coarse aggregate #8, Mg:
 $6.28 (0.03H) (0.3 + 4H + \frac{1}{2} \text{ inlet width}) (0.7119)$



SECTION A-A

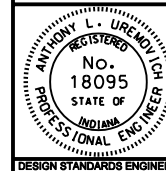
All Dimension are in mm unless otherwise specified

INDIANA DEPARTMENT OF TRANSPORTATION

**TEMPORARY DITCH INLET
PROTECTION, AGGREGATE RING**

SEPTEMBER 2001

STANDARD DRAWING NO. 205-TECI-01



/s/ Anthony L. Uremovich 9-04-01
DESIGN STANDARDS ENGINEER DATE

/s/ Ftrooz Zandi 9-04-01
CHIEF HIGHWAY ENGINEER DATE

DESIGN STANDARDS ENGINEER