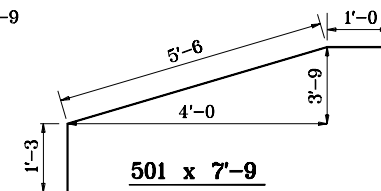


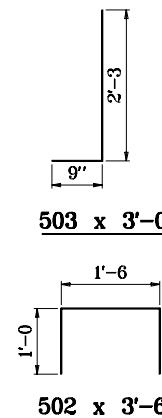
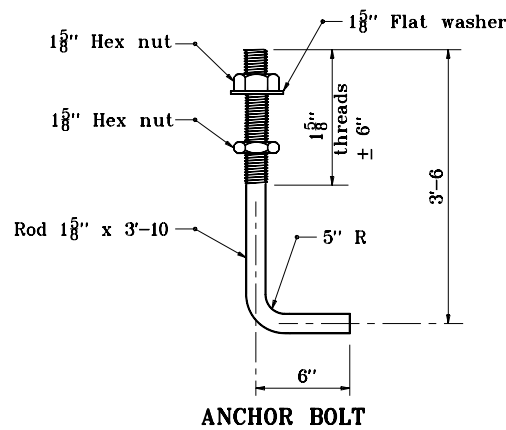
SECTION A-A



SHOULDER INSTALLATION

NOTE:

After threading, mechanically galvanize
top 12 in. of anchor bolt.



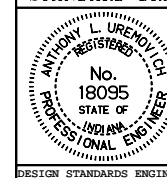
INDIANA DEPARTMENT OF TRANSPORTATION

BOX TRUSS SIGN SUPPORT

FOUNDATION DETAILS

SEPTEMBER 2001

STANDARD DRAWING NO. **E 802-SNBF-01**



/s/ Anthony L. Uremovich 9-04-01
DESIGN STANDARDS ENGINEER DATE

/s/ Firooz Zandi 9-04-01
CHIEF HIGHWAY ENGINEER DATE

DESIGN STANDARDS ENGINEER