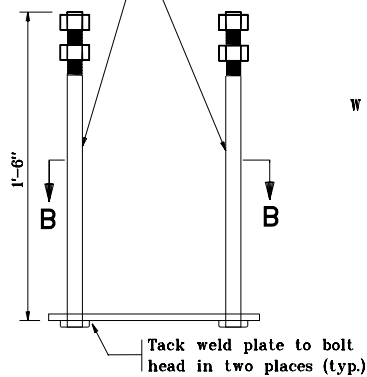


4-15/16" ϕ anchor bolts threaded 5" min. with 2 nuts and flat washers

2 - Threaded 3/4" ϕ reduced weld base stud x 2" long (see Detail) w/1- $\frac{1}{4}$ " washer C (see Detail) 1 lock washer and nut ϕ 100 ga.



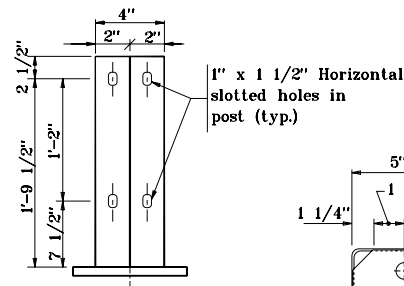
W 8 x 24 post

See Baseplate Detail

See Anchor Plate Details

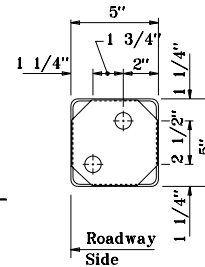
See Post Front View Detail

POST FRONT VIEW DETAIL



NOTES :

- Gap of 1" unless noted otherwise on plans. Railing splice required in panel with a deck expansion joint.



Rail tube member

$\frac{1}{4}$ 4 3/4 x 4 3/4 x 3/16 cope corners 3/4" to provide zinc drains

2 - 3/4" ϕ reduced base welded studs on each rail cap at guard rail connections

Install angle with washers and self locking nuts or nuts and jam nuts

RAIL CAP DETAIL

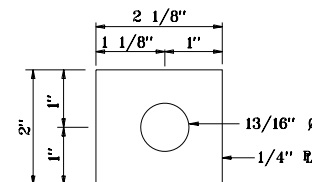
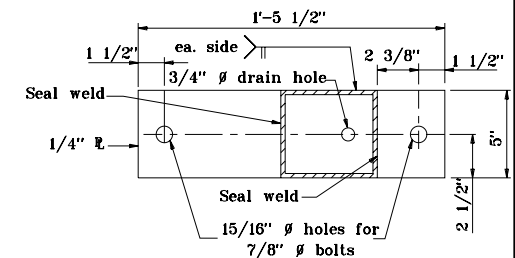
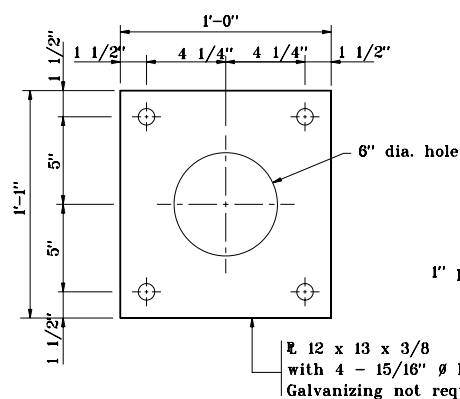


PLATE WASHER C DETAIL

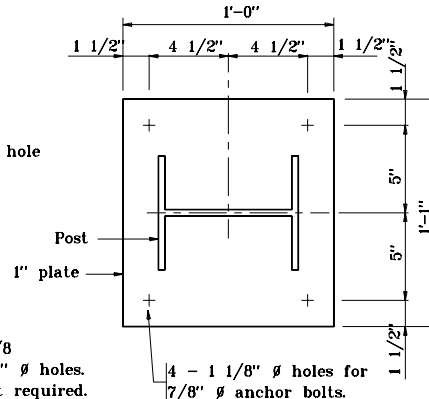


TOP RAIL END VIEW B - B

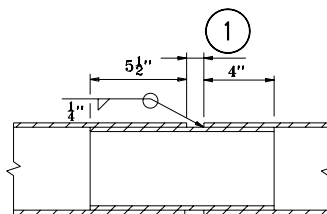


SECTION B - B

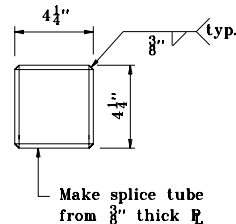
ANCHOR PLATE DETAILS



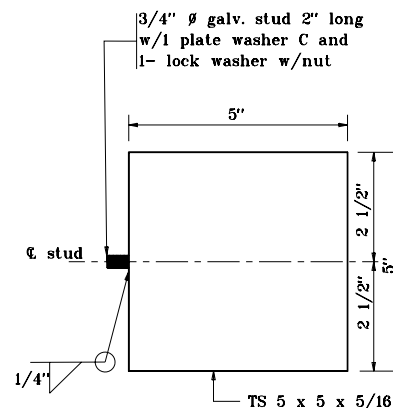
BASE PLATE DETAILS



RAILING SPLICE DETAILS



Make splice tube from 3/8" thick $\frac{1}{4}$



BASE WELD STUD DETAIL

INDIANA DEPARTMENT OF TRANSPORTATION	
RAILING, CF-1	
SEPTEMBER 2001	
STANDARD DRAWING NO.E 706-BRTM-02	
	/s/ Anthony L. Uremovich 9-04-01 DESIGN STANDARDS ENGINEER DATE
	/s/ Firooz Zandi 9-04-01 CHIEF HIGHWAY ENGINEER DATE
DESIGN STANDARDS ENGINEER	