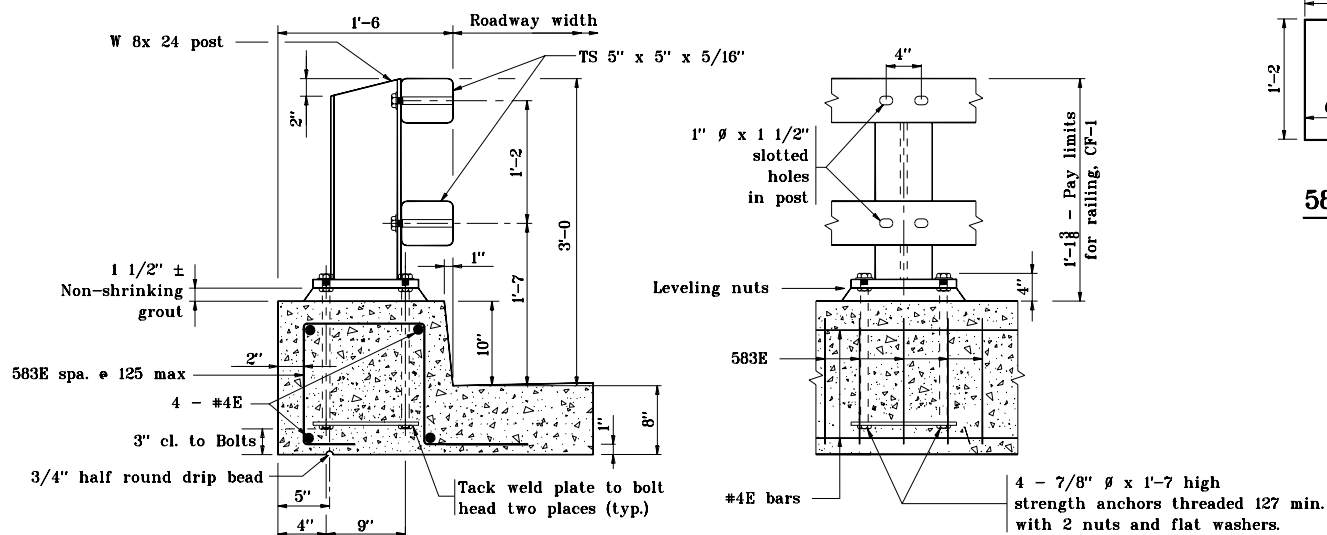


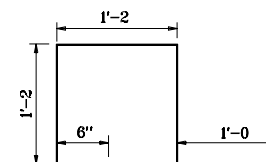
ELEVATION



CURB AND POST DETAILS

NOTES :

1. Guardrail connection may be omitted on exit end of one-way structure when omitted in detail plans.
2. Railing units shall be continuous over 2 or more posts.
3. See Standard Drawing E 706-BRTM-02 for Base Plate details, Anchor Plate details, Railing Splice details and Tube Size details.
4. See Standard Drawing E 601-TBGC-01 and E 601-TBGC-02 for Thrie-Beam components.
5. See Standard Drawing E 703-BRST-01 for standard 180° bar bending detail.
6. See Standard Drawing E 601-TTGT-01 and E 601-TTGT-02 for Guardrail Transition, TGT.
7. All reinforcing bars designated "E" shall be epoxy coated.



583E x 5'-0

INDIANA DEPARTMENT OF TRANSPORTATION	
RAILING, CF-1	
SEPTEMBER 2001	
STANDARD DRAWING NO. E 706-BRTM-01	
	/s/ Anthony L. Uremovich 9-04-01 DESIGN STANDARDS ENGINEER DATE
	/s/ Firooz Zandi 9-04-01 CHIEF HIGHWAY ENGINEER DATE
DESIGN STANDARDS ENGINEER	