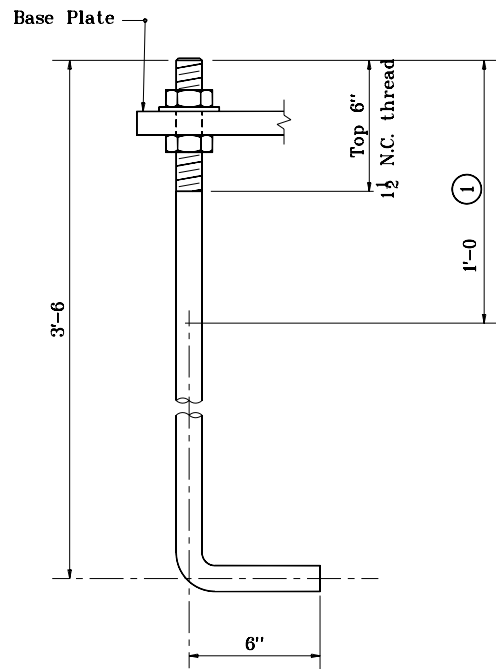
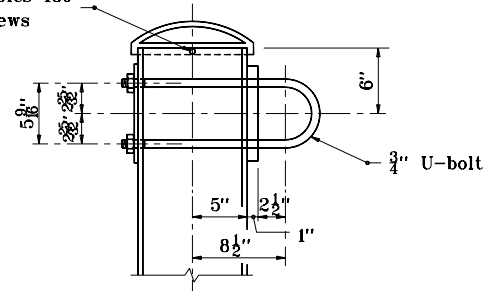


**3/4 IN. STAINLESS STEEL U-BOLT DETAIL**

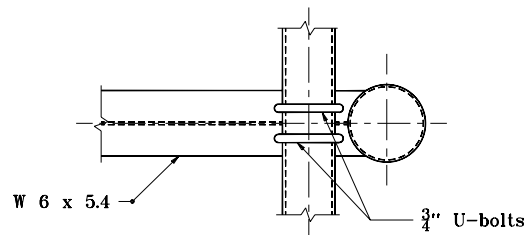


**ANCHOR BOLT DETAIL**

Drill and tap two holes 180°  
apart for 1/2" set screws



**UPPER CHORD CONNECTION DETAIL**



**LOWER CHORD CONNECTION DETAIL**

**NOTES:**

- ① After threading, coat or mechanically galvanize as required.

INDIANA DEPARTMENT OF TRANSPORTATION			
ALUMINUM STRUCTURE			
BOLT DETAILS			
SEPTEMBER 2000			
STANDARD DRAWING NO.E 803-SNOH-06			
	/s/ Anthony L. Uremovich 9-01-00		
	DESIGN STANDARDS ENGINEER	DATE	
DESIGN STANDARDS ENGINEER	/s/ Firooz Zandi 9-01-00		
	CHIEF HIGHWAY ENGINEER	DATE	