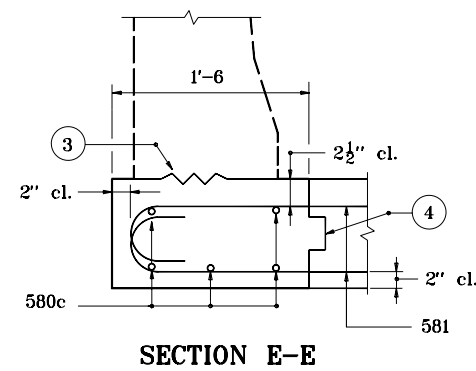


BILL OF MATERIALS				
These quantities are for one side Approach Slab Extension.				
EPOXY COATED REINFORCING STEEL				
Size & Mark	No. of Bars	Length (ft-in)	Weight (lb)	
580c	5	16'-7		
581	42	4'-10		
Total #5 bars			298	
Total Epoxy Coated Steel			298	
MISCELLANEOUS				
R.C. Br. Appr., 10"			2.8 yd <sup>2</sup>	



### NOTES :

1. See Standard Drawings E 706-TTBC-01 through -03 for concrete bridge railing transition type TBC details.
2. See Standard Drawing E 706-TASE-05 for General Notes.

INDIANA DEPARTMENT OF TRANSPORTATION	
BRIDGE RAIL TRAN. TYPE TBC	
SLAB EXTENSION	
SEPTEMBER 2000	
STANDARD DRAWING NO. E 706-TASE-01	
	/s/ Anthony L. Uremovich 9-01-00 DESIGN STANDARDS ENGINEER DATE
	/s/ Firooz Zandi 9-01-00 CHIEF HIGHWAY ENGINEER DATE