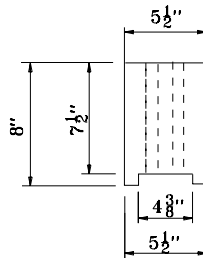
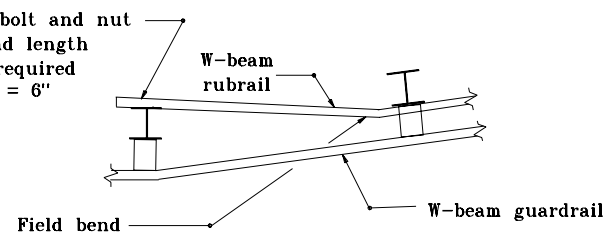


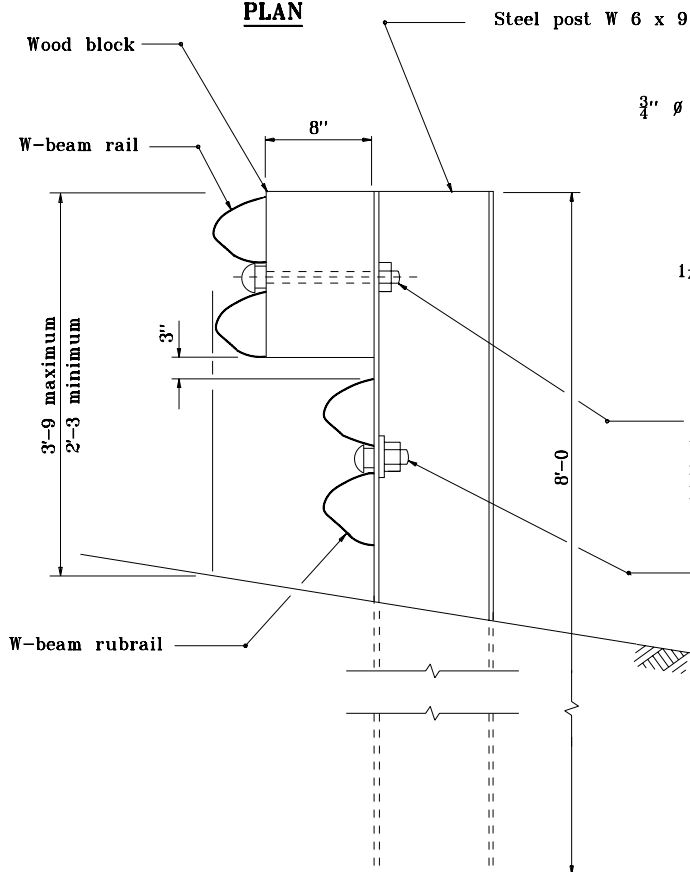
PLAN



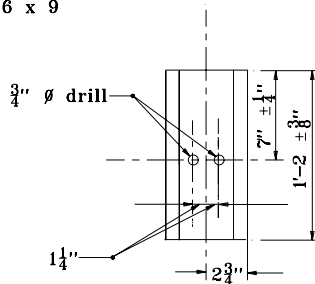
M16 hex bolt and nut
thread length
as required
L = 6"



RUBRAIL TERMINATION DETAIL



ELEVATION



WOOD BLOCK

5/8" button head guardrail bolt
with heavy hex nut 1" \varnothing x 1/8" deep
recess both sides.
L = 10", thread length T (min.) = 4"

5/8" button head bolt with
hex nut recessed both sides
Thread length T (min.) = 2", L = 2"

**STEEL POST AND WOOD BLOCK DETAIL
FOR WR-BEAM GUARDRAIL**

NOTES:

1. All posts shall be 8'-0 long and spaced at 6'-3.

INDIANA DEPARTMENT OF TRANSPORTATION	
WR-BEAM GUARDRAIL	
SEPTEMBER 2000	
STANDARD DRAWING NO.E 601-WBGA-06	
	/s/ Anthony L. Uremovich 9-01-00 DESIGN STANDARDS ENGINEER DATE
	/s/ Firooz Zandi 9-01-00 CHIEF HIGHWAY ENGINEER DATE
DESIGN STANDARDS ENGINEER	