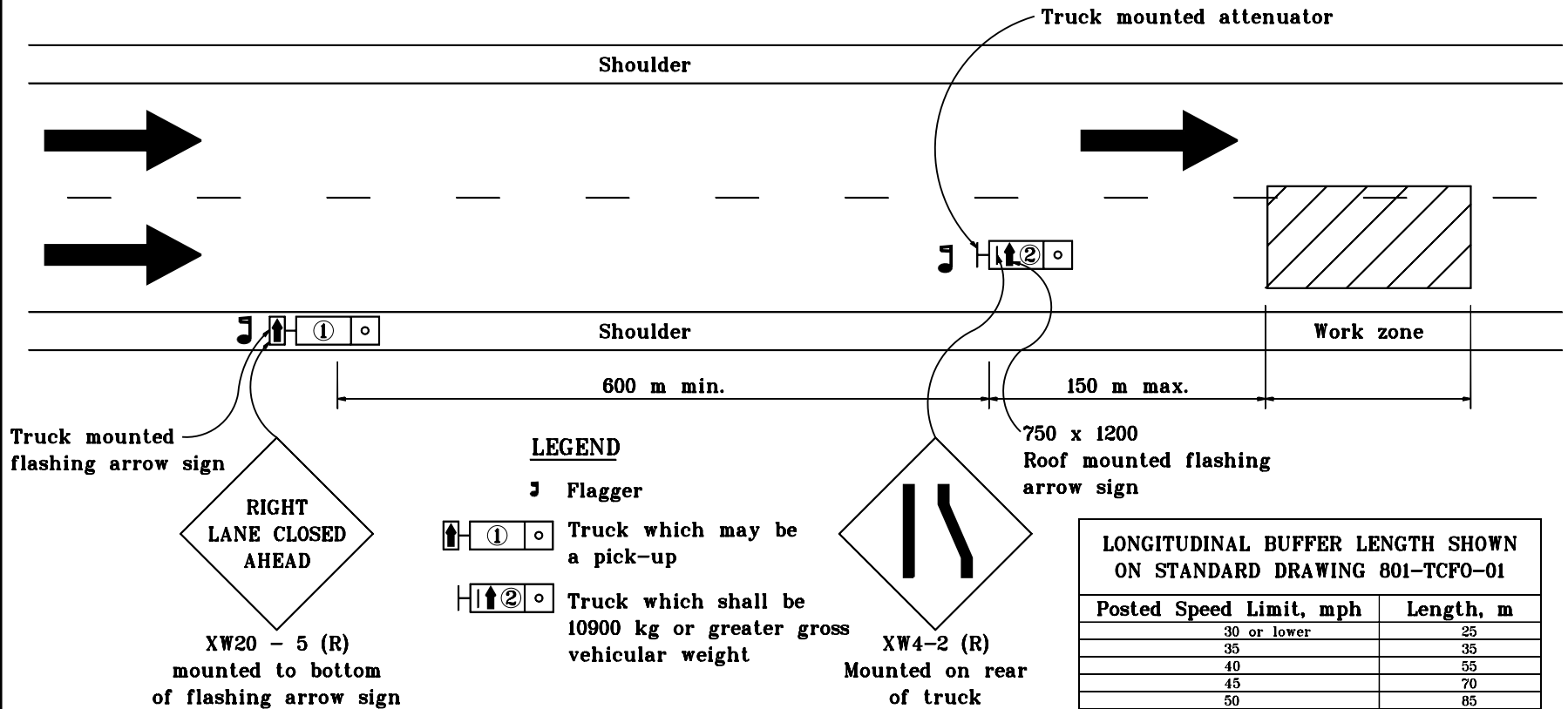


MULTI-LANE DIVIDED HIGHWAY



| LONGITUDINAL BUFFER LENGTH SHOWN ON STANDARD DRAWING 801-TCFO-01 | |
|--|-----------|
| Posted Speed Limit, mph | Length, m |
| 30 or lower | 25 |
| 35 | 35 |
| 40 | 55 |
| 45 | 70 |
| 50 | 85 |
| 55 | 105 |
| 60 | 125 |
| 65 | 150 |

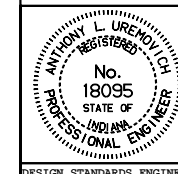
GENERAL NOTES

1. Flagger shall be used while trucks are stopped.
2. Strobe lights will be required on all vehicles.
3. Distances shown are approximate and may be adjusted as directed.
4. Truck mounted attenuator shall be designed to attenuate impacts by a pickup truck of 2000 kg gross vehicular mass at km/h.

All dimensions are in mm unless otherwise specified.

INDIANA DEPARTMENT OF TRANSPORTATION
MAINTENANCE OF TRAFFIC FOR
REFLECTOR REPLACEMENT
MAY 2000

STANDARD DRAWING NO. 801-TCFO-03



/s/ Anthony L. Uremovich 11-15-99
DESIGN STANDARDS ENGINEER DATE

/s/ Firooz Zandi 11-15-99
CHIEF HIGHWAY ENGINEER DATE