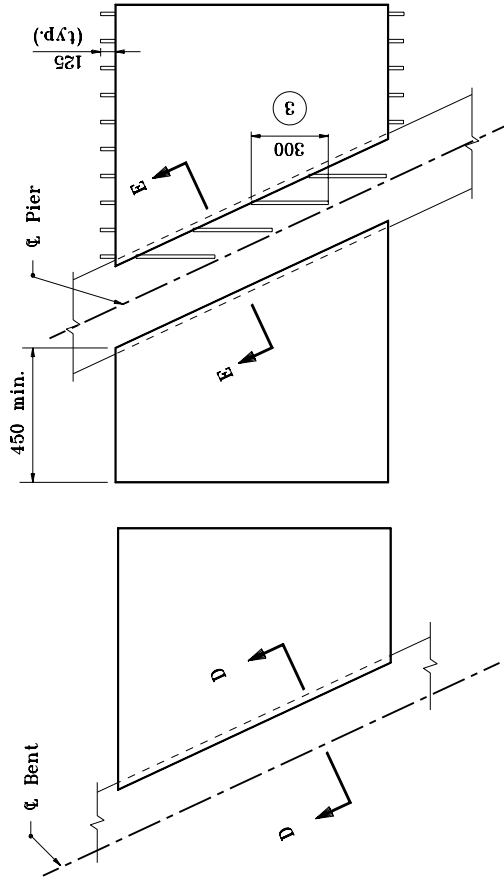
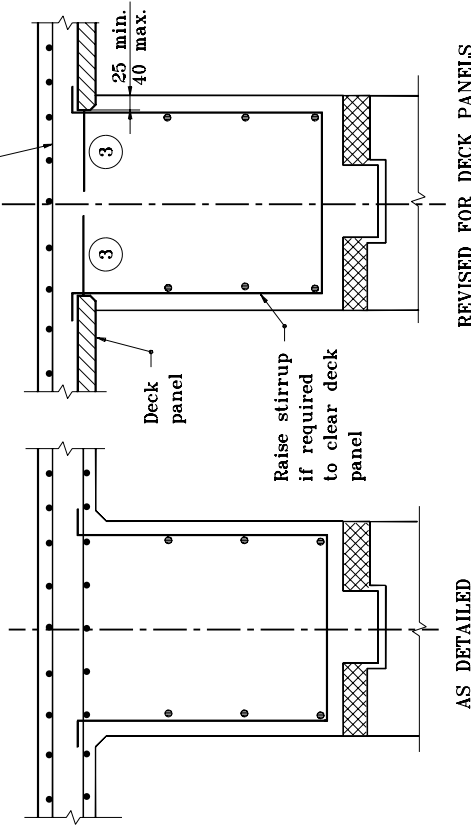


Verify that longitudinal top steel will adequately resist negative support moment with longitudinal bottom steel omitted. Supply additional longitudinal steel in top row, if required.



## SKEWED PANELS AT PIERS AND END BENTS



## SECTION E-E INTERIOR BEAM DETAIL

### NOTES :

1. See Standard 707-BPDP-02 for General Notes.
2. Details shown in Sections D-D & E-E indicate when precast deck panels are used. These details may be altered, when necessary to conform to original plan details.

③ Extend stirrups 300 mm on this edge.

All dimensions are in mm unless otherwise specified.

INDIANA DEPARTMENT OF TRANSPORTATION

## SKEWED PANELS

## AT PIERS AND END BENTS

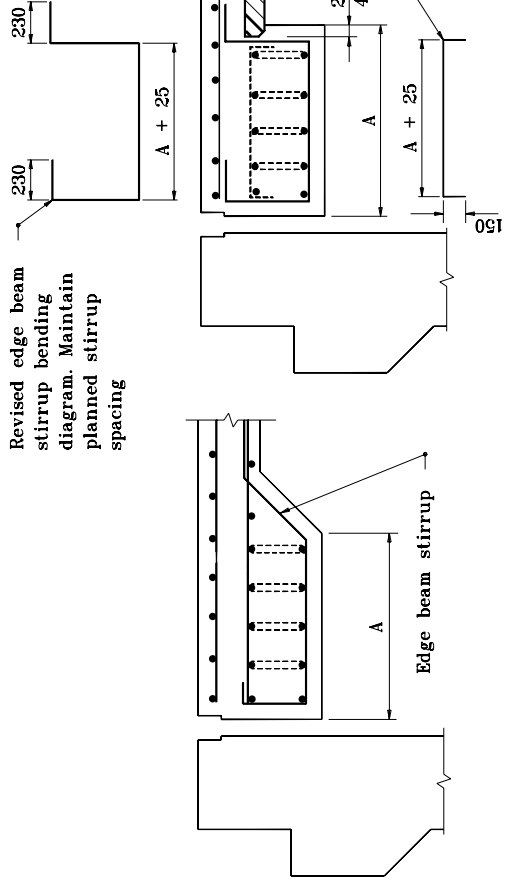
MAY 2000

STANDARD DRAWING NO. 707-BPDP-05

AS DETAILED

REVISED FOR DECK PANELS

## SECTION D-D TRANSVERSE EDGE BEAM DETAILS



/s/ Anthony L. Uremovich  
DESIGN STANDARDS ENGINEER  
DATE

/s/ Firooz Zandi  
CHIEF HIGHWAY ENGINEER  
DATE

INDIANA DEPARTMENT OF TRANSPORTATION  
STANDARD DRAWING NO. 707-BPDP-05  
MAY 2000