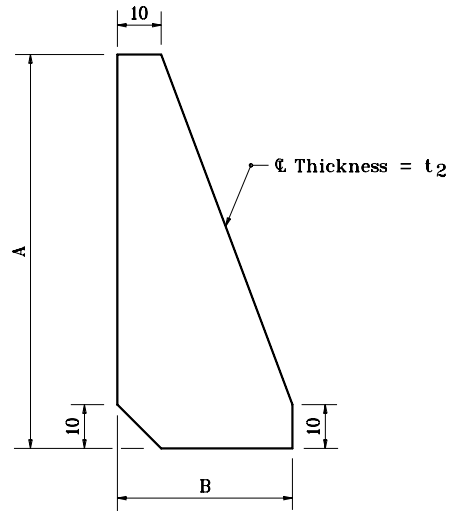


Furnish $2-0.30 \pm$ thick and $2-0.8 \pm$ thick shims per post.

SHIM DETAIL



STIFFENER PLATE DETAIL
(See table on Std. Dwg. No. 802-SNGP-05 for dimensions and weight)

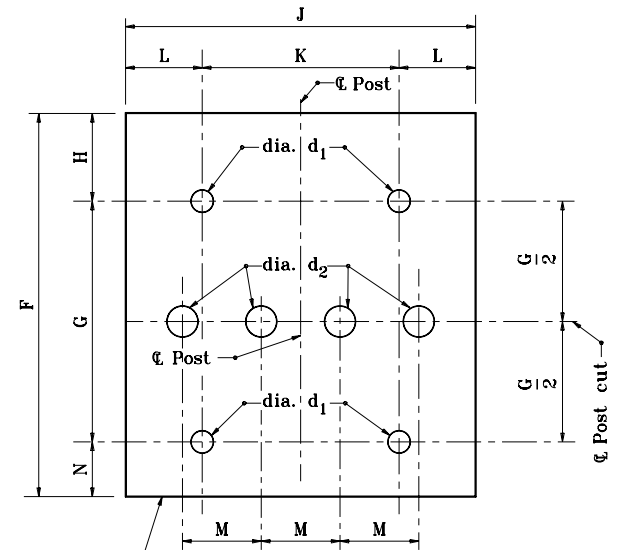
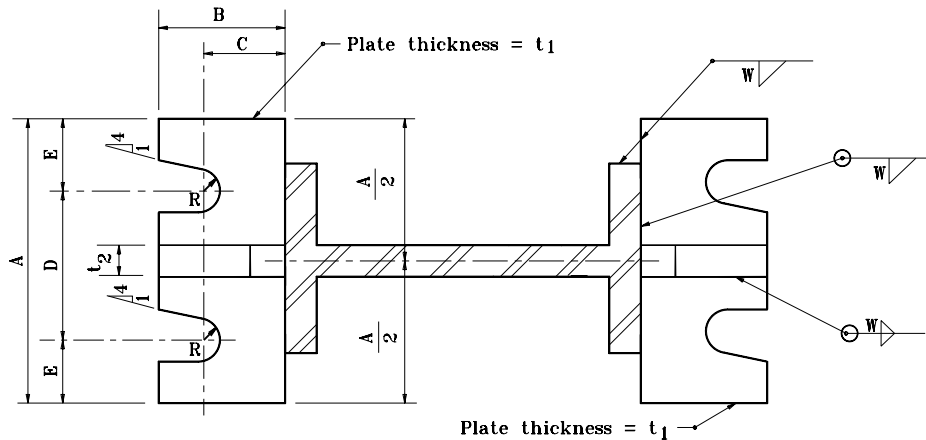


Plate thickness = t_3

Use H.S. bolts with hex head, & hex nut, one flat washer under each bolt head and bevel or flat washer (where required) under nut.

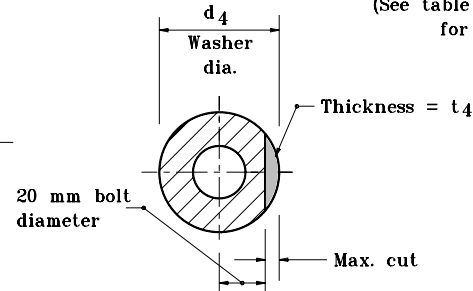
PERFORATED FUSE PLATE DETAIL

(See table on Std. Dwg. No. 802-SNGP-06 for dimensions and weight)



BASE PLATE DETAIL

(See table on Std. Dwg. No. 802-SNGP-05 for dimensions and weight)



NOTE: The inside diameter of washer is equal to bolt diameter plus 2 mm

CLIPPED WASHER DETAIL

(See table for dimensions)

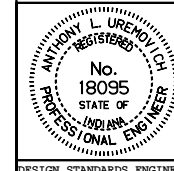
All dimensions are in mm unless otherwise specified.

INDIANA DEPARTMENT OF TRANSPORTATION

SIGN DETAILS

MAY 2000

STANDARD DRAWING NO. 802-SNGP-04



/s/ Anthony L. Uremovich 5-01-00
DESIGN STANDARDS ENGINEER DATE

/s/ Firooz Zandi 5-01-00
CHIEF HIGHWAY ENGINEER DATE

DESIGN STANDARDS ENGINEER