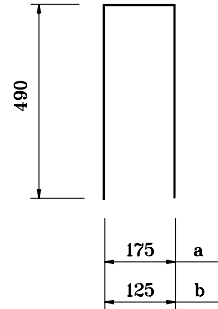


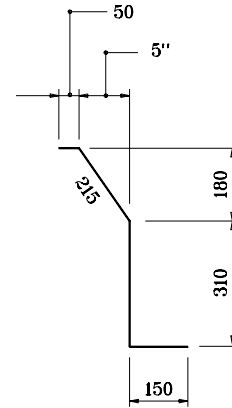
1682a x 1660

1682b x 1610



1684a x 1160

1684b x 1110



1685 x 580

BILL OF MATERIALS

These quantities are for one concrete bridge railing transition type TBC.

EPOXY COATED REINFORCING STEEL

Size & #	No. of Bars	Length	Mass (kg)
1682a	15	1660	
1682b	16	1610	
1684a	15	1160	
1684b	16	1110	
1685	11	580	
#16	13	1700	
Total #16 Bars			177

#13	7	3500	
-----	---	------	--

Total #13 Bars			24
Total Epoxy Coated Steel			

MISCELLANEOUS in RAILING

Concrete, Class C	1.0 m ³
Surface Seal	9.3 m ²

840 COMMON HEIGHT THRIE BEAM/
CONCRETE BRIDGE RAILING TRANSITION

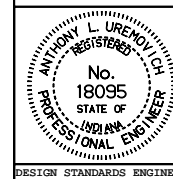
All dimensions are in mm unless otherwise specified.

INDIANA DEPARTMENT OF TRANSPORTATION

**CONCRETE BRIDGE RAILING
TRANSITION TYPE TBC**

MAY 2000

STANDARD DRAWING NO. **706-TTBC-03**



/s/ Anthony L. Uremovich 8-03-00
DESIGN STANDARDS ENGINEER DATE

/s/ Firooz Zandi 8-03-00
CHIEF HIGHWAY ENGINEER DATE

DESIGN STANDARDS ENGINEER