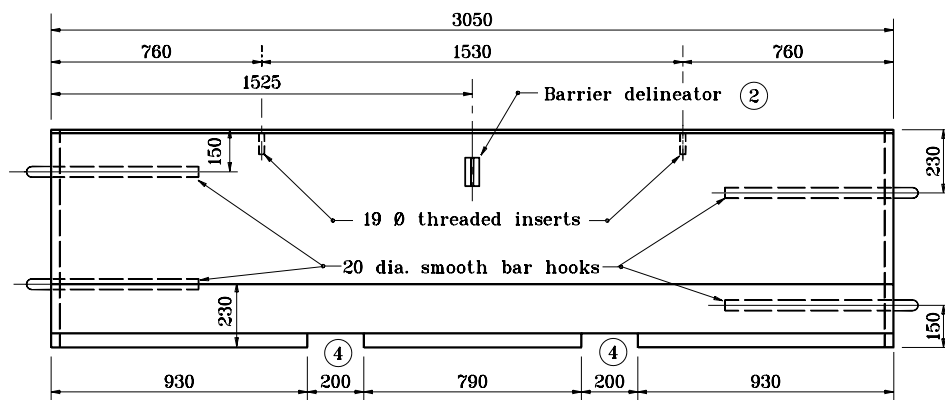
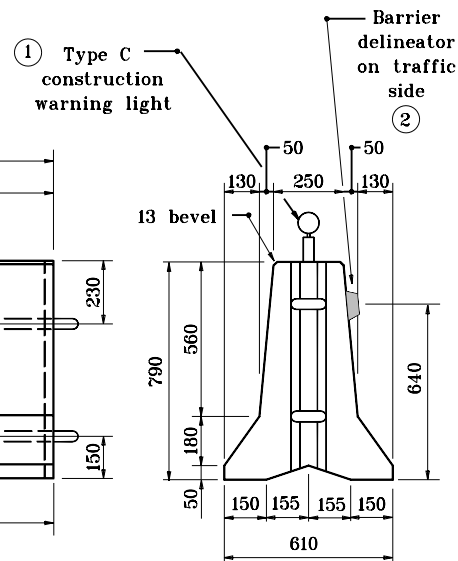


**TOP VIEW**



**FRONT VIEW**



**END VIEW**

**NOTES :**

- ① Type C construction warning lights shall be attached as shown and shall be spaced at the number of meters which is equal to 0.3 times the number of miles per hour in the posted speed limit, with a minimum spacing of 6 m.
- ② Barrier delineators shall be mouted on both sides of the barrier when the barrier is used to separate opposing traffic.
3. Type C construction warning lights and barrier delineators shall not be used on temporary concrete barrier located along a tapered alignment when it is located behind drums or other reflective delineation devices.
- ④ The dimensions of the lifting slots are subject to adjustment as necessary to accomadate handling equipment.
5. For energy absorbing terminal, cz unit, use number of bays shown in Table No.1 for legal posted speed.
6. Maximum barrier taper rate flares for lane closures for legal posted speed are shown in Table No.2.

**TABLE NO. 1**

CONSTRUCTION ZONE SPEED	NUMBER OF BAYS REQUIRED
45 mph or less	3 Bay
Over 45 mph	6 Bay

**TABLE NO. 2**

CONSTRUCTION ZONE SPEED	TAPER FLARE RATE
55 mph	16 : 1
50 mph	14 : 1
45 mph	13 : 1
40 mph	11 : 1

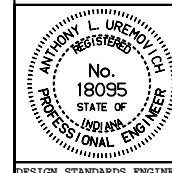
All dimensions are in mm unless otherwise specified.

INDIANA DEPARTMENT OF TRANSPORTATION

**TEMPORARY CONCRETE BARRIER  
BARRIER DIMENSIONS**

MAY 2000

STANDARD DRAWING NO. 602-TCCB-01



/s/ Anthony L. Uremovich 11-15-99  
DESIGN STANDARDS ENGINEER DATE

/s/ Firooz Zandi 11-15-99  
CHIEF HIGHWAY ENGINEER DATE

DESIGN STANDARDS ENGINEER