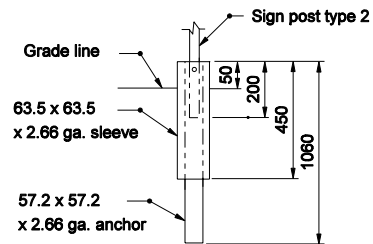


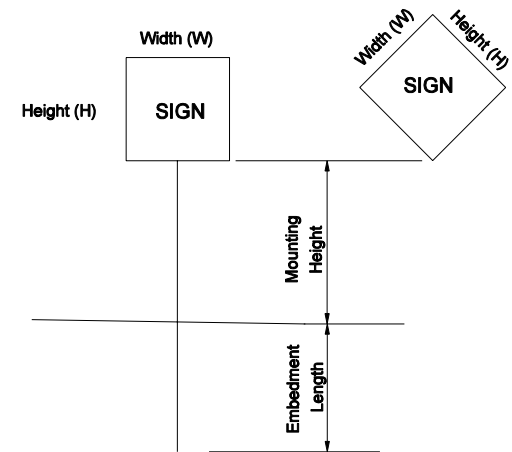
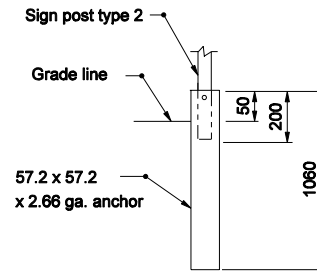
SQUARE POST

2.66 Thickness



SQUARE POST

2.66 Thickness

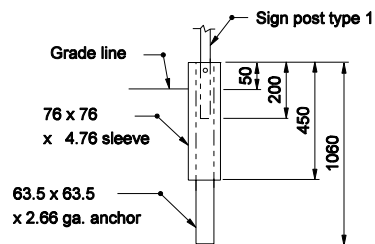


REINFORCED ANCHOR BASE

UNREINFORCED ANCHOR BASE

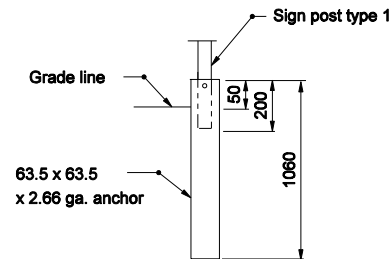
SQUARE POST

2.66 Thickness



SQUARE POST

2.66 Thickness



POST	TYPE	WALL THICKNESS	NO. OF POSTS PERMITTED IN 2.1 m PATH	EMBEDMENT LENGTH
U-CHANNEL	A, B		1 OR 2	1010
SQUARE	1	2.66 ga.	1	ANCHOR BASE
	2	2.66 ga.	1 OR 2	

REINFORCED ANCHOR BASE

UNREINFORCED ANCHOR BASE

GENERAL NOTES:

- See Standard Drawing 802-SNGS-09 for sign size and mounting height table.

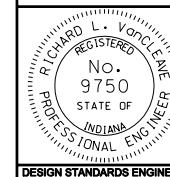
All Dimension are in mm unless otherwise specified

INDIANA DEPARTMENT OF TRANSPORTATION

STEEL SIGN POSTS

MARCH 2004

STANDARD DRAWING NO. 802-SNGS-10



/s/ Richard L. VanCleave 3-01-04
DESIGN STANDARDS ENGINEER DATE

/s/ Richard K. Smutzer 3-01-04
CHIEF HIGHWAY ENGINEER DATE

DESIGN STANDARDS ENGINEER