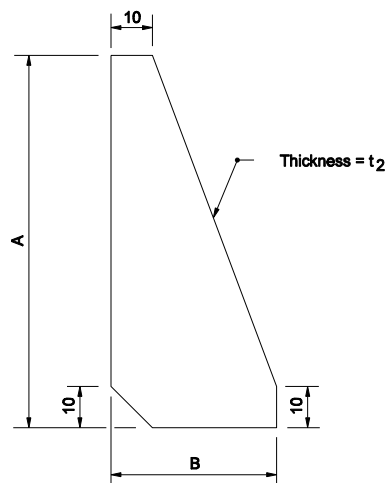
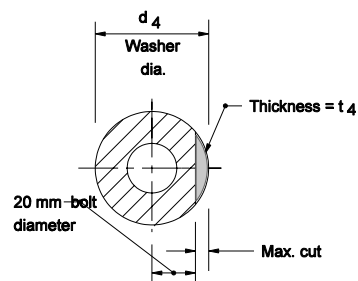


PERFORATED FUSE PLATE DETAIL (3)



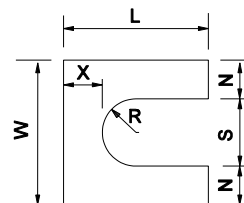
STIFFENER PLATE DETAIL



NOTE:
The inside diameter of washer is equal to bolt diameter plus 2 mm.

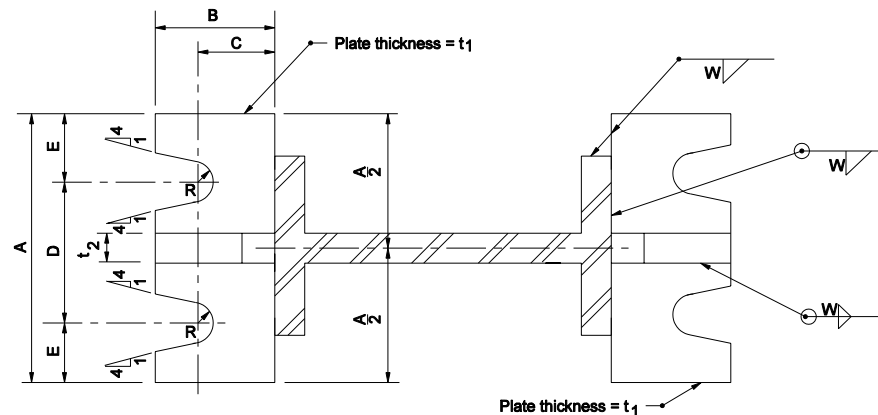
CLIPPED WASHER DETAIL (4)

SHIM DETAIL						
BOLT DIAMETER	L	W	N	R	S	X
M12 to M20	44	44	12	10	21	12
M24	51	51	9.5	16	32	12



Furnish 2-0.012 ± thick and 2-0.03± thick shims per post.

SHIM DETAIL



BASE PLATE DETAIL

Notes:

1. See table on Standard Drawing 802-SNGP-05 for dimensions and weight of stiffener plate and base plate.
2. See table on Standard Drawing 802-SNGP-06 for dimensions and weight of perforated fuse plate.
3. Use H.S. bolts with hex head, & hex nut, one flat washer under each bolt head and beveled or flat washer (where required) under nut.
4. For dimensions of clipped washer, see table 1, Manual of Steel Construction, AISC 8th Edition, specification for ASTM A325 and A490 Bolts.
5. Dimensional tolerances excluding the thickness for shims is ± 1.

All Dimension are in mm unless otherwise specified	
INDIANA DEPARTMENT OF TRANSPORTATION	
SIGN DETAILS	
MARCH 2004	
STANDARD DRAWING NO. 802-SNGP-04	
	/s/ Richard L. VanCleave DESIGN STANDARDS ENGINEER 3-01-04 DATE
	/s/ Richard K. Smutzer CHIEF HIGHWAY ENGINEER 3-01-04 DATE