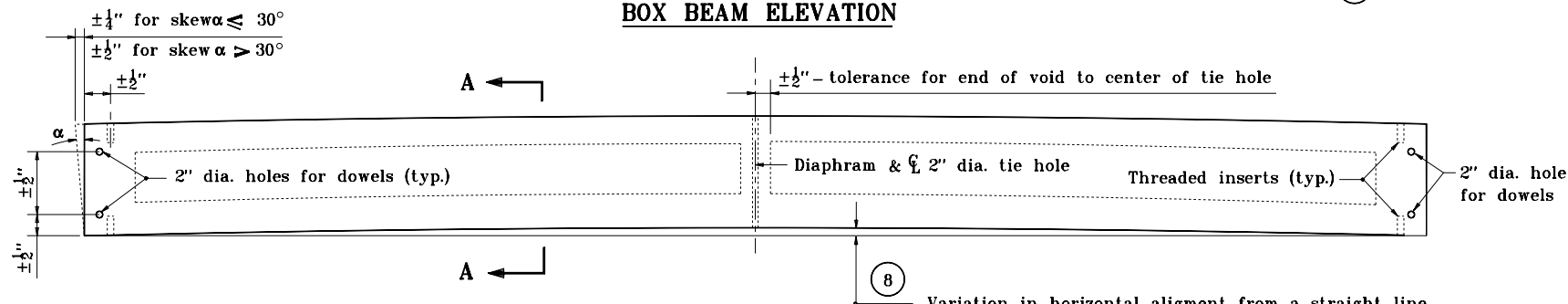
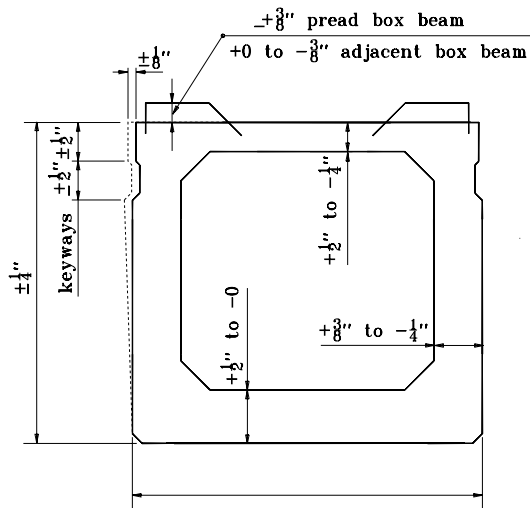


BOX BEAM ELEVATION



BOX BEAM PLAN

Variation in horizontal alignment from a straight line, end to end of beam and parallel to centerline of beam shall be: $\pm \frac{1}{4}"$ up to 40' beam lengths, $\pm \frac{3}{8}"$ for 40' to 60' beam lengths, $\pm \frac{1}{2}"$ for above 60' lengths.



SECTION A-A

NOTES :

- For General Notes see Standard Drawing E 707-BPBF-03.
- The top surface of box beam shall not vary more than $\frac{1}{8}"$ in 10' as measured from a straightedge.
- Tolerance of beam ends for deviation from a true vertical with respect to top and bottom surfaces.
- Tolerances for reinforcing bars for composite beam.
- Projection above top of spread box beam shall be $\pm \frac{3}{8}"$. Projection above top of adjacent box beam $+0$ to $-\frac{3}{8}"$.

INDIANA DEPARTMENT OF TRANSPORTATION	
FABRICATION TOLERANCES PRESTRESSED BOX BEAM	
MAY 2000	
STANDARD DRAWING NO. E 707-BPBF-01	
	/s/ Anthony L. Uremovich 5-01-00 DESIGN STANDARDS ENGINEER DATE
	/s/ Firooz Zandi 5-01-00 CHIEF HIGHWAY ENGINEER DATE