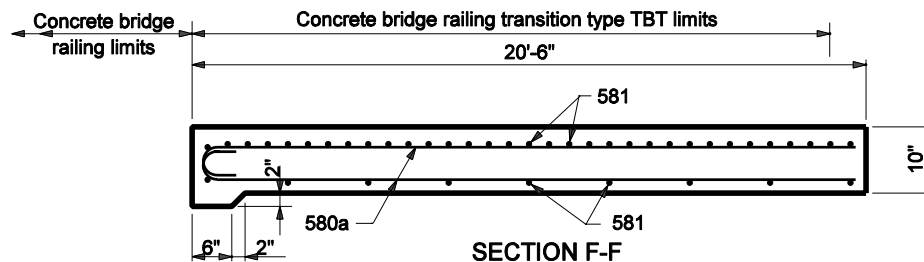
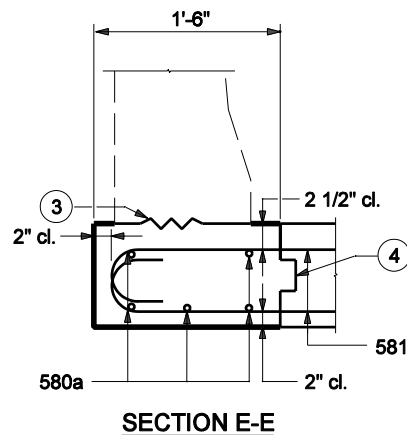


PLAN



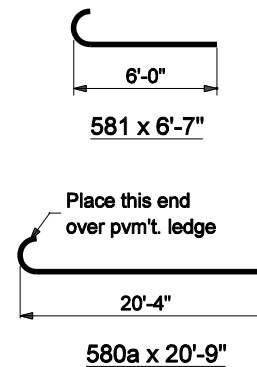
SECTION F-F



SECTION E-E

| BILL OF MATERIALS | | | |
|--|-------------|--------------|---------------------|
| These quantities are for one side Approach Slab Extension. | | | |
| EPOXY COATED REINFORCING STEEL | | | |
| Size & Mark | No. of Bars | Length (ft.) | Weight (lb) |
| 580a | 5 | 20'-9" | |
| 581 | 52 | 6'-7" | |
| Total #5 Bars | | | 465 |
| Total Epoxy Coated Steel | | | 465 |
| MISCELLANEOUS | | | |
| R.C. Br. Appr., 10" | | | 3.4 yd ² |

APPROACH SLAB EXTENSION DETAILS



NOTES:

1. See Standard Drawing E 706-TTBT-01 through -03 for concrete bridge railing transition type TBT details.
2. See Standard Drawing E 706-TASE-05 for General Notes.

| | |
|---|--|
| INDIANA DEPARTMENT OF TRANSPORTATION | |
| BRIDGE RAILING TRANSITION TBT SLAB EXTENSION | |
| MARCH 2004 | |
| STANDARD DRAWING NO. E 706-TASE-02 | |
| | /s/ Anthony L. Uremovich DESIGN STANDARDS ENGINEER 3-01-04 DATE |
| | /s/ Richard K. Smutzer CHIEF HIGHWAY ENGINEER 3-01-04 DATE |
| DESIGN STANDARDS ENGINEER | |