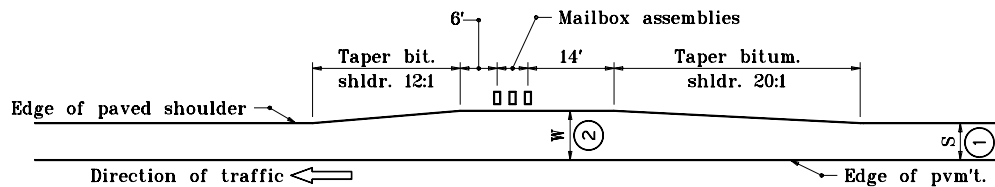
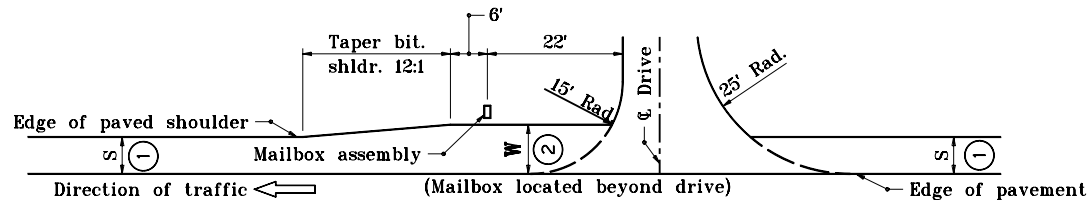


GENERAL NOTES

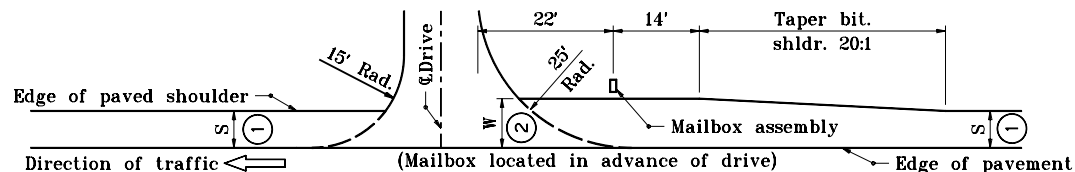
- ① S = Normal width of bituminous shoulder as shown on plans.
- ② W = Width of mailbox approach at mailbox.
 W = 12' preferred, 10' minimum greater than 1500. A.D.T. equal to or
 W = 10' preferred, 8' minimum for A.D.T. of 100 or greater, and less than 1500.
3. Mailbox approach pavement material shall be the same as the shoulder material.



TYPICAL MAILBOX APPROACH



COMBINATION MAILBOX APPROACH & DRIVE

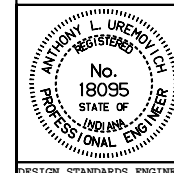


COMBINATION MAILBOX APPROACH & DRIVE

INDIANA DEPARTMENT OF TRANSPORTATION

MAILBOX APPROACH PLAN VIEWS SEPTEMBER 1999

STANDARD DRAWING NO. **E 611-MBAP-01**



DETAILS PLACED IN THIS FORMAT 11-15-99

/s/ Anthony L. Uremovich 11-15-99
DESIGN STANDARDS ENGINEER DATE

/s/ Firooz Zandi 11-15-99
CHIEF HIGHWAY ENGINEER DATE

DESIGN STANDARDS ENGINEER

ORIGINALLY APPROVED 9-01-99