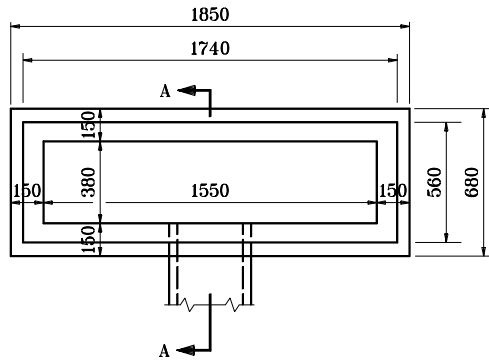


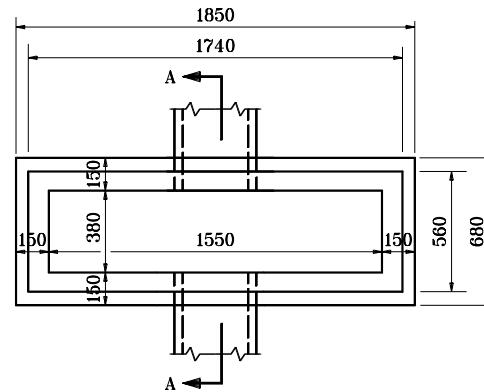
GENERAL NOTES

- ① See Standard Drawing 720-ICCA-15 for casting type 14 details.
- ② 2-#16 x 1700 epoxy coated reinf. bars.



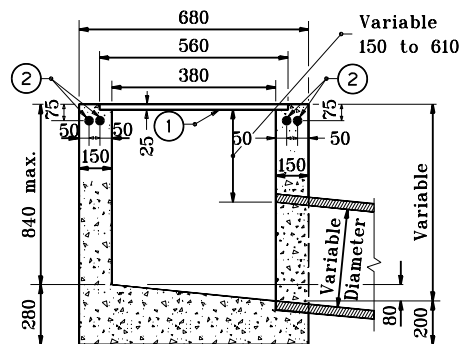
PLAN

INLET TYPE S

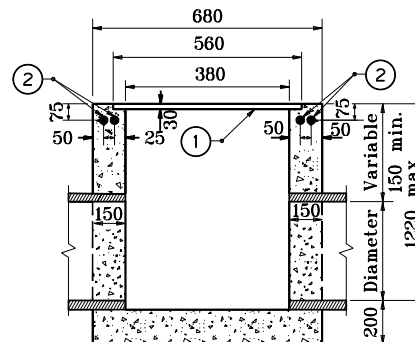


PLAN

INLET TYPE T



SECTION A-A



SECTION A-A

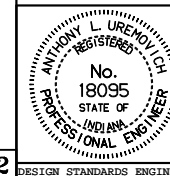
All dimensions are in mm unless otherwise specified.

INDIANA DEPARTMENT OF TRANSPORTATION

INLETS TYPE S AND T

SEPTEMBER 1997

STANDARD DRAWING NO. **720-INST-10**



/s/ Anthony L. Uremovich 9-01-97
DESIGN STANDARDS ENGINEER DATE

/s/ Donald W. Lucas 9-01-97
CHIEF HIGHWAY ENGINEER DATE

Source Sheet: **MD2**