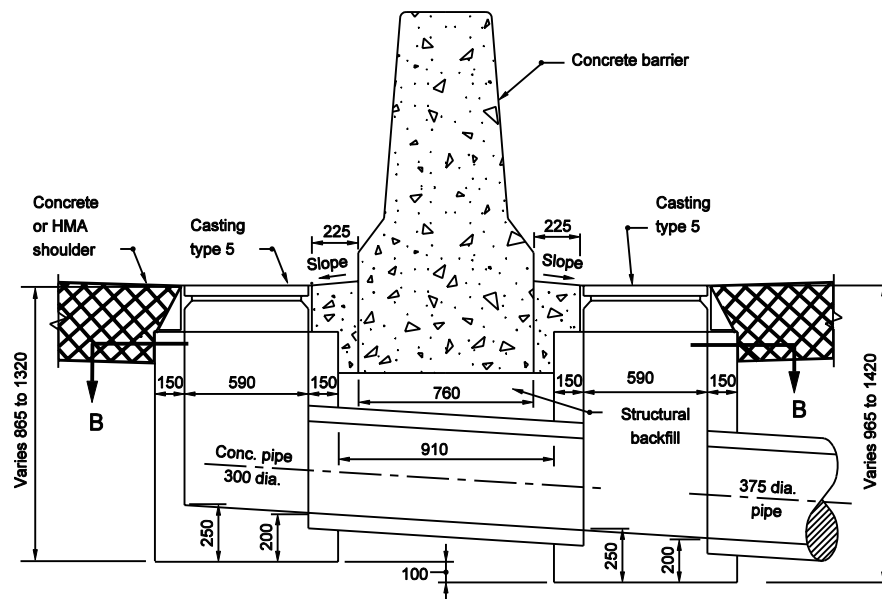


PLAN



SECTION A-A

NOTES:

1. Each inlet Type H includes two boxes, the connector pipe between the inlet boxes, and two type 5 castings.
2. See Standard Drawing 720-ICCA-01 through -03 for casting type 5 details.

All Dimension are in mm unless otherwise specified	
INDIANA DEPARTMENT OF TRANSPORTATION	
INLET TYPE H	
MARCH 2003	
STANDARD DRAWING NO. 720-INST-05A	
	/s/ Richard L. VanCleave DESIGN STANDARDS ENGINEER 3-03-03 DATE
	/s/ Richard K. Smutzer CHIEF HIGHWAY ENGINEER 3-03-03 DATE
DESIGN STANDARDS ENGINEER	