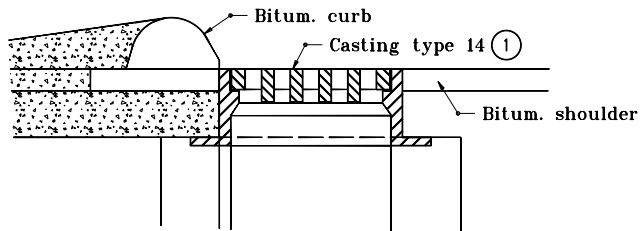
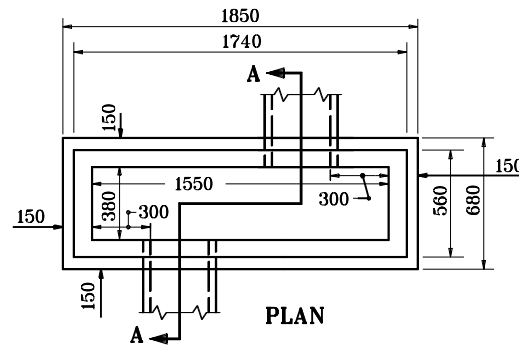


# **GENERAL NOTES**

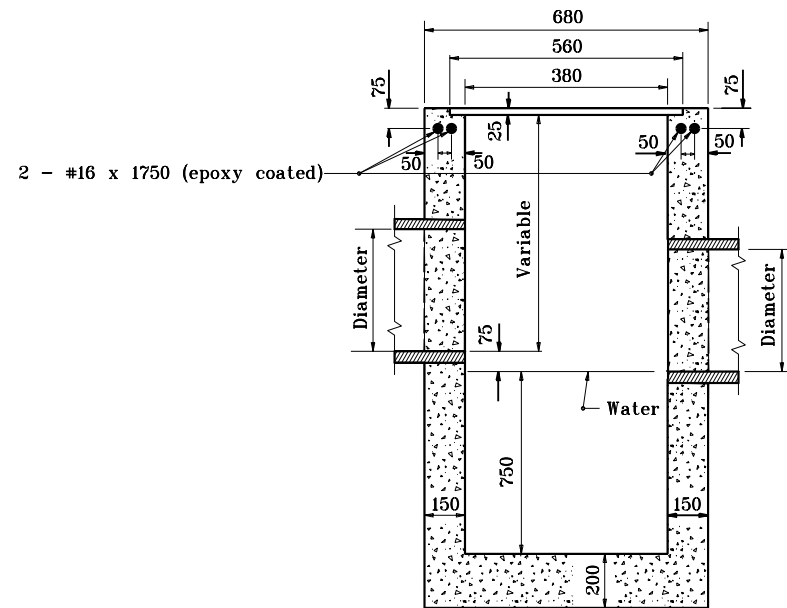
① See Standard Drawing 720-ICCA-15 for casting type 14 details.



**PLACEMENT DETAIL FOR  
TYPE 14 CASTING**



**CATCH BASIN TYPE S**



**SECTION A-A**

All dimensions are in mm unless otherwise specified.

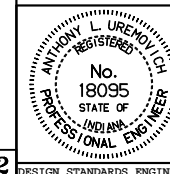
INDIANA DEPARTMENT OF TRANSPORTATION

**CATCH BASIN**

**TYPE S**

SEPTEMBER 1997

STANDARD DRAWING NO. 720-CBST-07



/s/ Anthony L. Uremovich 9-01-97  
DESIGN STANDARDS ENGINEER DATE

/s/ Donald W. Lucas 9-01-97  
CHIEF HIGHWAY ENGINEER DATE

Source Sheet: MD2