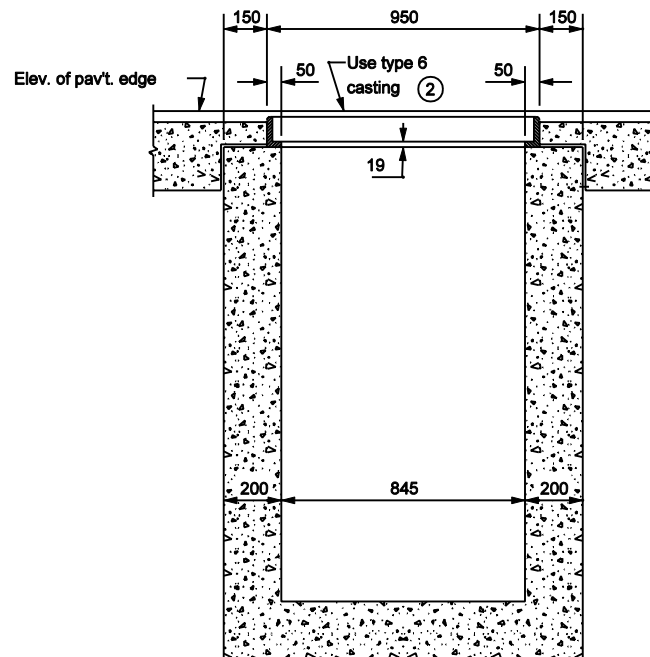
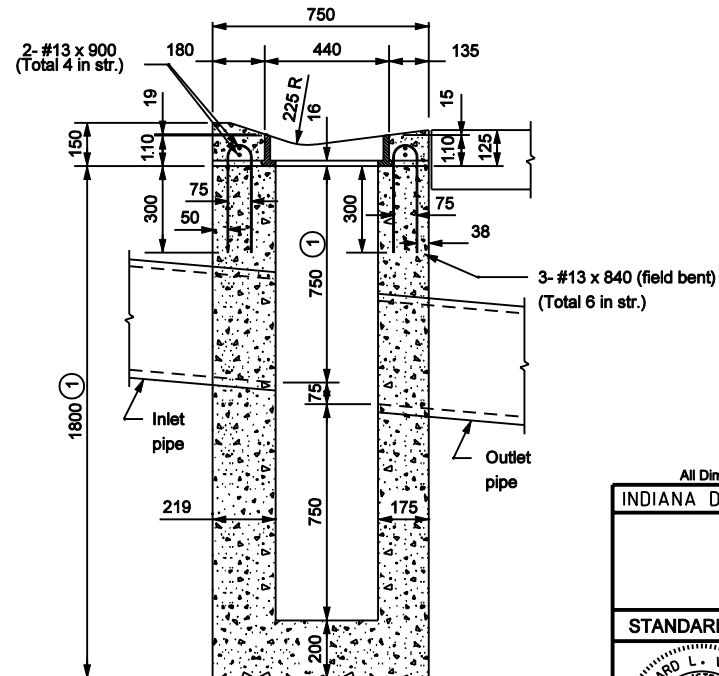


PLAN



SECTION A-A



SECTION B-B

GENERAL NOTES

- ① These dimensions may be increased or decreased by 300 as directed.
- ② See Standard Drawing 720-INCA-01 for casting type 6 details.

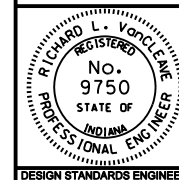
All Dimension are in mm unless otherwise specified

INDIANA DEPARTMENT OF TRANSPORTATION

**CATCH BASIN
TYPE D**

MARCH 2003

STANDARD DRAWING NO. 720-CBST-02



/s/ Richard L. VanCleave 3-03-03
DESIGN STANDARDS ENGINEER DATE

/s/ Richard K. Smutzer 3-03-03
CHIEF HIGHWAY ENGINEER DATE

DESIGN STANDARDS ENGINEER