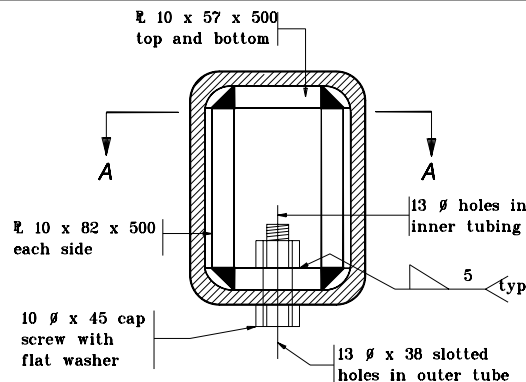
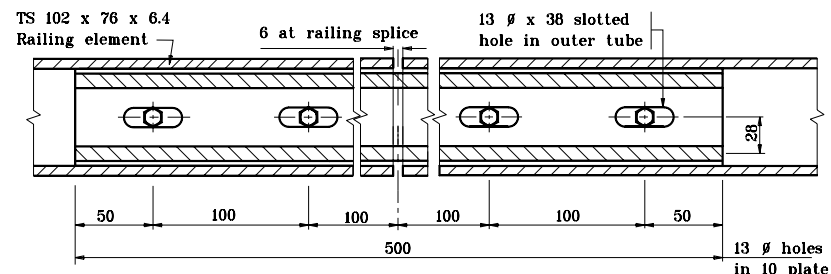


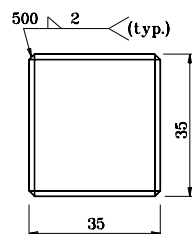
**FINISHED DIMENSIONS
OF INNER SLEEVE FOR
TS 102 X 76 X 6.4**



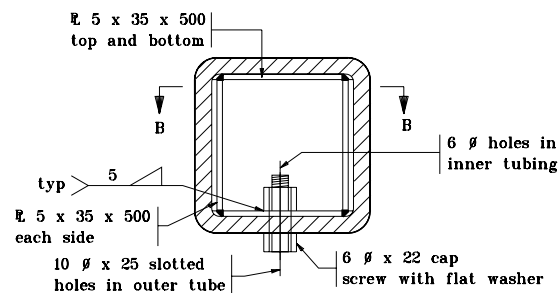
**INNER SLEEVE FOR
TS 102 x 76 x 6.4**



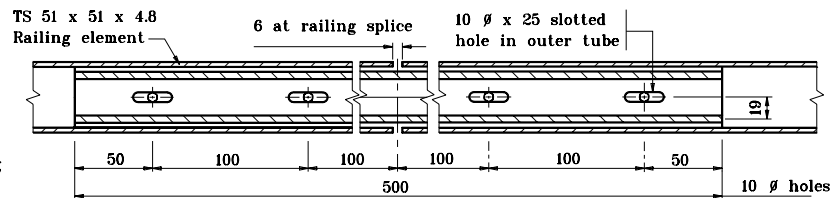
SECTION A - A



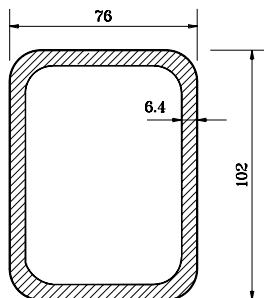
**FINISHED DIMENSIONS
OF INNER SLEEVE FOR
TS 51 x 51 x 4.8**



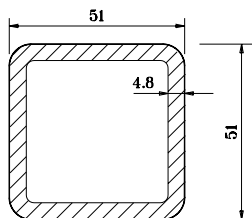
**INNER SLEEVE FOR
TS 51 x 51 x 4.8**



SECTION B - B



TS 102 x 76 x 6.4



TS 51 x 51 x 4.8

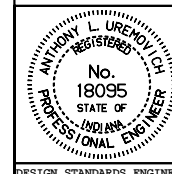
All dimensions are in mm unless otherwise specified.

INDIANA DEPARTMENT OF TRANSPORTATION

**RAILING, PF & PS
DETAILS**

MAY 2000

STANDARD DRAWING NO. 706-BRPP-05



/s/ Anthony L. Uremovich 5-01-00
DESIGN STANDARDS ENGINEER DATE

/s/ Firooz Zandi 5-01-00
CHIEF HIGHWAY ENGINEER DATE