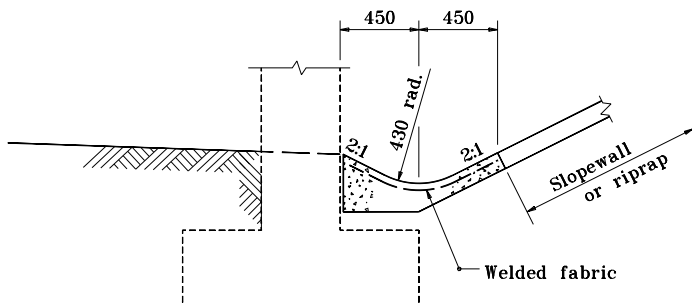
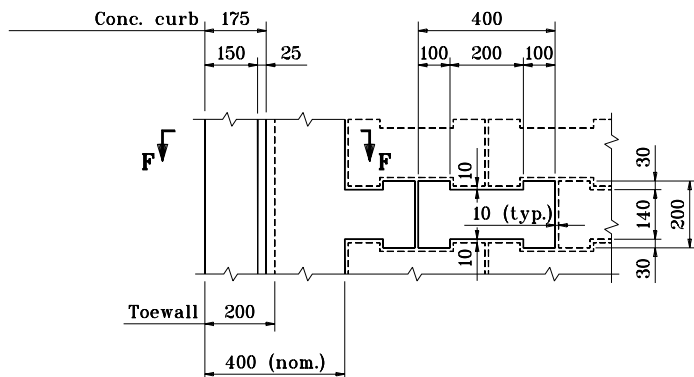


SECTION THROUGH PRECAST RIPRAP



SECTION THROUGH PAVED DITCH AT TOE OF SLOPE

(See layout on plans for location of paved ditch)



PLAN - PRECAST CONCRETE RIPRAP

GENERAL NOTES

1. See Standard Drawing 616-MB2-D for Section F-F.
2. If riprap is specified, 300 mm hand-laid riprap or precast concrete riprap type A may be used.
3. Precast conc. riprap
Type A: H = 195 mm (200 mm nom.)
Type B: H = 95 mm (100 mm nom.)

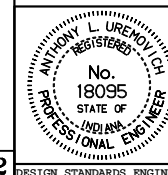
All dimensions are in mm unless otherwise specified.

INDIANA DEPARTMENT OF TRANSPORTATION

RIPRAP SLOPEWALL DETAILS

SEPTEMBER 1997

STANDARD DRAWING NO. 616-SWRR-02



/s/ Anthony L. Uremovich 9-01-97
DESIGN STANDARDS ENGINEER DATE

/s/ Donald W. Lucas 9-01-97
CHIEF HIGHWAY ENGINEER DATE

Source Sheet: MB2