

# EXAMPLE FOR TYPE C, W = 7.2 m

Intersection control angle  $\theta = 100^\circ$

L = 26.37 m

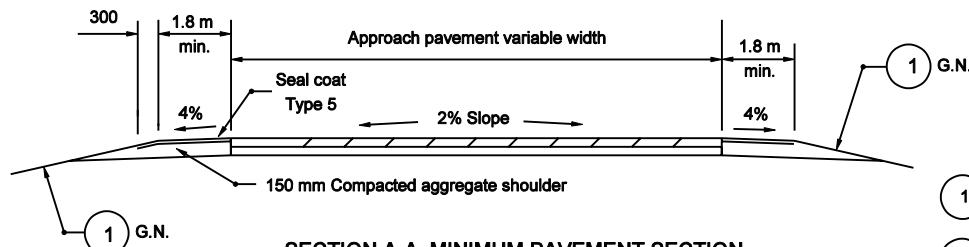
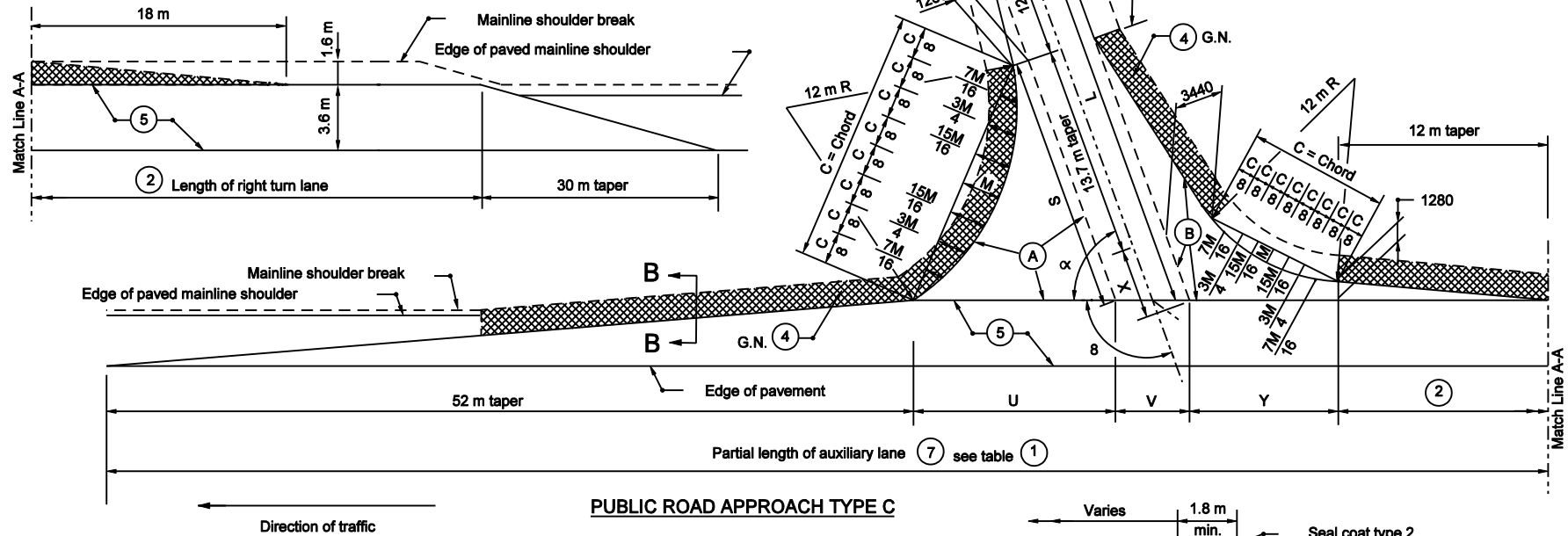
S = 13.53 m

U = 15.77 m

X = 7.88 m

Y = 11.89 m

Total area = 352.02 m



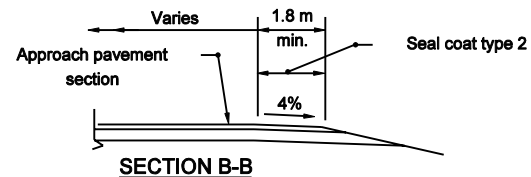
## SECTION A-A MINIMUM PAVEMENT SECTION

For ADT  $\leq 1000$

90 kg/m HMA Surface Type A on

150 kg/m HMA Intermediate Type A on

200 mm compacted aggregate base #53



## NOTES :

- 1 See Standard Drawing 610-PRAP-09 for table with computed values.
- 2 See Standard Drawing 610-PRAP-11 for Table A.
3. See Standard Drawing 610-PRAP-08 for General Notes and pay limits.
4. G.N. - See General Notes

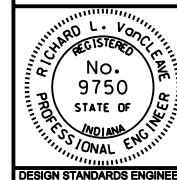
All Dimension are in mm unless otherwise specified

INDIANA DEPARTMENT OF TRANSPORTATION

PUBLIC ROAD APPROACH  
TYPE C

MARCH 2003

STANDARD DRAWING NO. 610-PRAP-06



/s/ Richard L. VanCleave 3-03-03  
DESIGN STANDARDS ENGINEER DATE

/s/ Richard K. Smutzer 3-03-03  
CHIEF HIGHWAY ENGINEER DATE