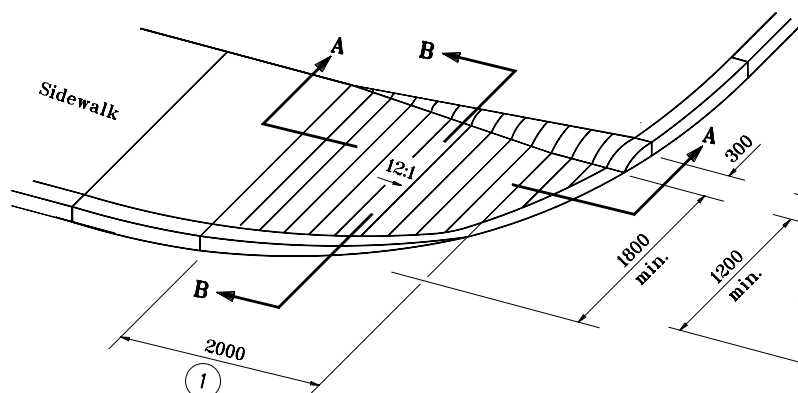
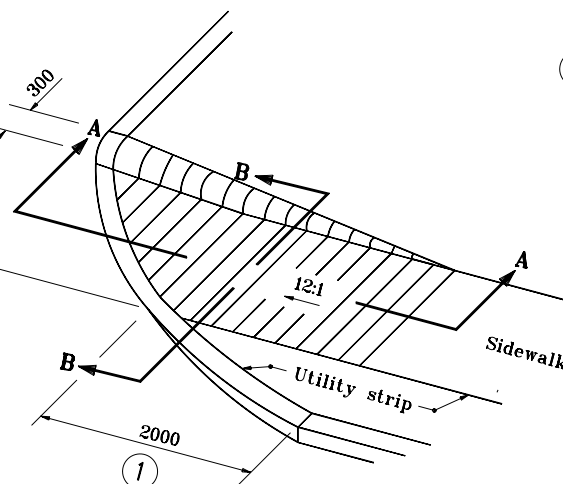


GENERAL NOTES

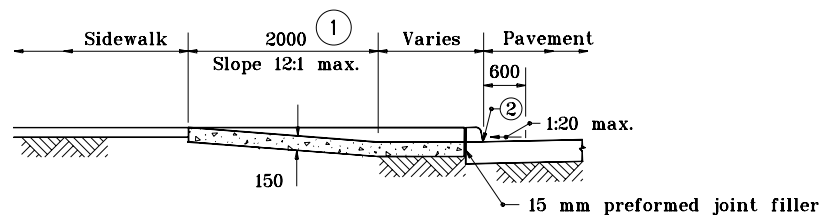
- ① These dimension are based on a 150 mm curb height, and shall be proportionally adjusted for other curb heights.
- ② The bottom edge of the curb ramp shall be flush with the edge of the adjacent pavement and gutter line



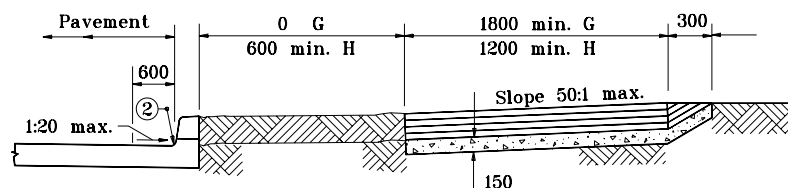
CURB RAMP, TYPE G



CURB RAMP, TYPE H



SECTION A-A (Reversed for Type H)



SECTION B-B (Reversed for Type H)

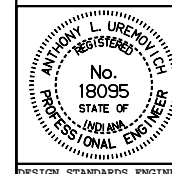
All dimensions are in mm unless otherwise specified.

INDIANA DEPARTMENT OF TRANSPORTATION

CURB RAMPs TYPE G AND H

JANUARY 2000

STANDARD DRAWING NO. **604-SWCR-09**



/s/ Anthony L. Uremovich 1-03-00
DESIGN STANDARDS ENGINEER DATE

/s/ Firooz Zandi 1-03-00
CHIEF HIGHWAY ENGINEER DATE